



NORTH FALLS

Offshore Wind Farm

**CONSULTATION
REPORT
APPENDIX E.29 TO E.32
PART 4**

Document Reference: 4.1.2.4

Volume: 4

APFP Regulation: 5(2)(q)

Date: July 2024

Revision: 0

NorthFallsOffshore.com



Project Reference: EN010119



Project	North Falls Offshore Wind Farm
Document Title	Consultation Report Appendix E.29 to E.32 (Part 4)
Document Reference	4.1.2.4
APFP Regulation	5(2)(q)
Supplier	Camargue Group Limited
Supplier Document ID	CAMEPT40724

This document and any information therein are confidential property of North Falls Offshore Wind Farm Limited and without infringement neither the whole nor any extract may be disclosed, loaned, copied or used for manufacturing, provision of services or other purposes whatsoever without prior written consent of North Falls Offshore Wind Farm Limited, and no liability is accepted for loss or damage from any cause whatsoever from the use of the document. North Falls Offshore Wind Farm Limited retains the right to alter the document at any time unless a written statement to the contrary has been appended.

Revision	Date	Status/Reason for Issue	Originator	Checked	Approved
0	July 2024	Submission	Camargue	NFOW	NFOW



NORTH FALLS

Offshore Wind Farm

CONTENTS

E Appendices (continued)

E.29	Stage 2 (pre-application) consultation report	269
E.30	Risk assessment of stage 2 (pre-application) consultation event venues	322
E.31	Email thanking people for participation in stage 2 (pre-application) consultation	366
E.32	Summary of stage 2 (pre-application) consultation on website	368



NORTH FALLS

Offshore Wind Farm

APPENDIX E

E.29

Stage 2 (pre-application) consultation report



NORTH FALLS

Offshore Wind Farm

NON-STATUTORY CONSULTATION REPORT

North Falls Consultation held October to December 2022

March 2023



CONSULTATION REPORT

March 2023

Project	North Falls Offshore Wind Farm
Sub-Project or Package	
Document Title	
Document Reference	
Revision	
Supplier Reference No	Camargue

This document and any information therein are confidential property of North Falls Offshore Wind Farm Limited and without infringement neither the whole nor any extract may be disclosed, loaned, copied or used for manufacturing, provision of services or other purposes whatsoever without prior written consent of North Falls Offshore Wind Farm Limited, and no liability is accepted for loss or damage from any cause whatsoever from the use of the document. North Falls Offshore Wind Farm Limited retains the right to alter the document at any time unless a written statement to the contrary has been appended.

Revision	Date	Status/Reason for Issue	Originator	Checked	Approved

TABLE OF CONTENTS	Page No
Report on our non-statutory consultation (2022)	
1. Purpose of the report	5
2. Introduction	5
3. North Falls approach to consultation	6
4. Information provided at consultation	7
5. Promoting the consultation	7
6. Publication of the consultation website	9
7. Briefings conducted with stakeholders	11
8. Number of responses received	11
9. Summary of responses received	12
Figures	
Figure 1 - Location of the offshore site and proposed cable corridor route	5
Figure 2 – Diagram outlining types of feedback received during non-statutory consultation.	12
Appendices	
PRE-EVENT PUBLICITY	
Appendix A - Postcard mailer	25
Appendix B – A4 poster	26
Appendix C – Online advertisements	27
STAKEHOLDER ENGAGEMENT	
Appendix D – Example stakeholder email	28
Appendix E – Stakeholders contacted at consultation launch	29
Appendix F – Email inviting councillors to breakfast event	33
Appendix G – Email thanking people for participation in the consultation	34
Appendix H – Example letter to landowners	34
MEDIA ENGAGEMENT AND COVERAGE	
Appendix I – Press releases, media coverage and media list	35
Appendix J – Advertisement in the Clacton and Frinton Gazette	39
EVENTS	
Appendix K – Photos from events	40

Appendix L – Webinar recordings	41
Appendix M – Exhibition panels	42
Appendix N – Example brochure pages	45
Appendix O – VR headsets	45
Appendix P – 3D visualisations	46
Appendix Q – Fact sheet	46
Appendix R – A2 copies of project maps	47
Appendix S – Children’s colouring sheet	47
Appendix T – KiT card	47
Appendix U – North Falls branded material	48
Appendix V– Wobble board	48
Appendix W – Consultation website example pages	49
Appendix X – Interactive consultation map	50
Appendix Y – Feedback	51
Appendix Z – Feedback postcard	52

REPORT ON OUR NON-STATUTORY CONSULTATION (2022)

1. PURPOSE OF THE REPORT

This North Falls Non-statutory Consultation Report for North Falls Offshore Wind Farm presents the results of the non-statutory pre-application consultation that took place between 17 October and 9 December 2022.

This report sets out details of the consultation undertaken and provides a summary of the feedback received in relation to the proposals, from statutory consultees and local communities. It presents North Falls' responses to the consultation feedback received, explaining how the project has had regard to this feedback.

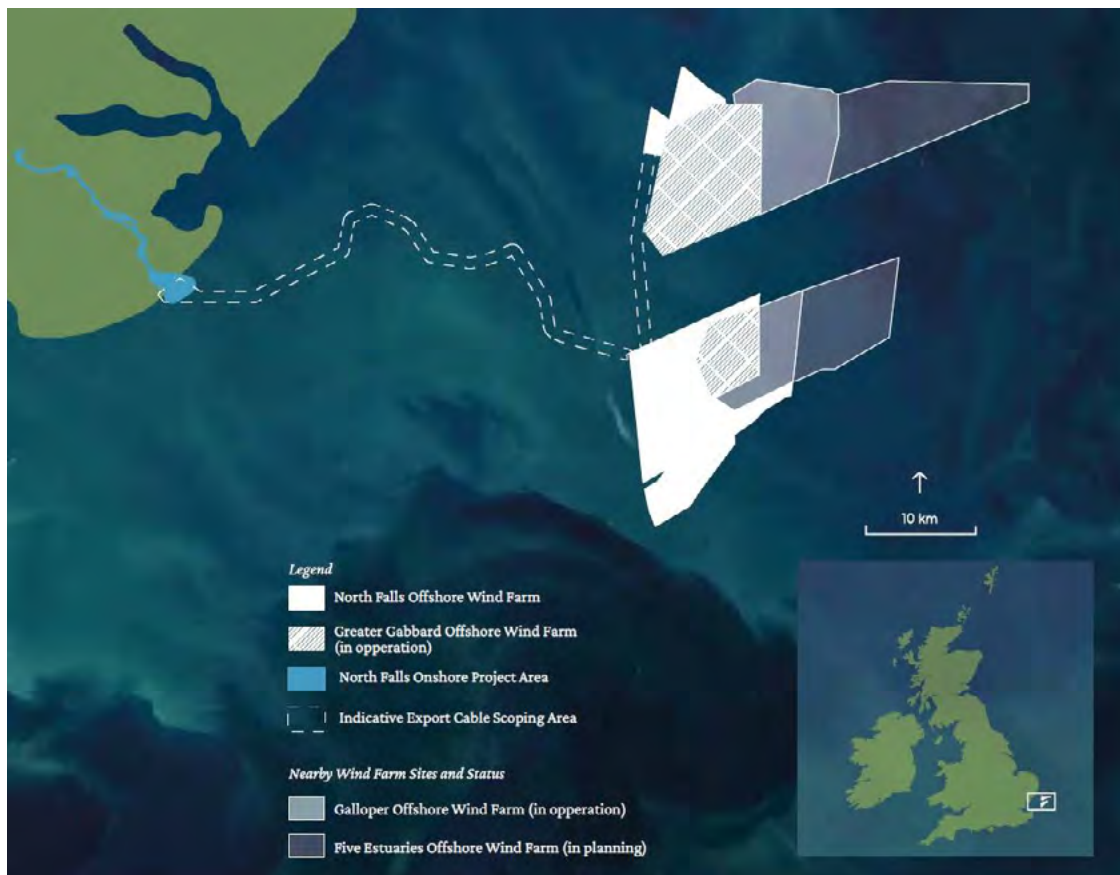
It will inform the final Consultation Report that is required to accompany the development consent order (DCO) application. This document is provided for information only.

2. INTRODUCTION

North Falls Offshore Wind Farm is an extension to the existing 504 MW Greater Gabbard Offshore Wind Farm. The project is being developed in the southern North Sea, more than 20km off the UK coast. The site is in two parts, which together cover a total area of 150km². The project is being developed by North Falls Offshore Wind Farm Limited, a joint venture company owned equally by SSE Renewables and RWE.

A map of the location of North Falls Offshore Wind Farm and proposed broad cable corridor route is presented below in Figure 1.

Figure 1: Location of the offshore site and proposed cable corridor route



Between 17 October 2022 and 9 December 2022, a non-statutory community consultation on the project was held following an introductory community consultation on the project held the previous year. The first consultation was live between 25 October 2021 and 10 December 2021.

Where the initial stage of consultation in 2021 was conducted wholly online, the second consultation was delivered as a mix of online and in-person events, and promoted to the local community via media releases, digital and display advertising with the Clacton and Frinton Gazette, printed leaflets delivered to approximately 12,000 addresses and direct emails to local stakeholders / those who have registered an interest in the project.

3. NORTH FALLS' APPROACH TO CONSULTATION

This non-statutory consultation was the second of up to four consultation phases, including one statutory phase, that will be undertaken during the project's development and before the development consent order (DCO) application is submitted.

It was designed to give stakeholders and local people the opportunity to find out how the project proposals have progressed over the past 12 months and provide feedback. The consultation covered the whole project – onshore and offshore – however specific questions were asked, and feedback requested, on: selection of the landfall construction compound location from within a refined zone; substation search area, and onshore cable route.

A further round of consultation will be held in 2023 to ensure stakeholders are provided with another opportunity to give their views and feedback on the project. This will be the project's statutory consultation and people will be asked for their feedback on the North Falls Preliminary Environmental Information Report (PEIR), which will feed into the final development consent application that will be submitted to the Planning Inspectorate. This further round of consultation will be both online and face-to-face and will follow a similar format to the non-statutory consultation held in late 2022.

Overall approach

The project team's approach was to design a consultation that was accessible, written in plain and easy-to-understand language and provided plenty of opportunities to respond.

The strategy was to design a programme featuring both online and face-to-face elements, supported by wide-reaching promotion. This included a digital publicity campaign that publicised the dedicated consultation portal and feedback mechanisms, as well as posted mailouts, direct emails and in-person engagement. This enabled broad reach to raise awareness and opportunities to either attend events or have immediate access to online information. Alongside the portal, the latter included recordings of virtual events, which provided flexibility, tailored to different working patterns and enabled engagement from a wide range of audiences across a large geographical area.

Recognising that digital platforms may not suit everyone's needs, five in-person events were held, where people could go locally to find out more about the proposals, speak to members of the project team and ask questions. These events also included a virtual interactive fly-through of the proposals – run by an on-hand software expert - helping people to visualise how the plans may impact them and/or their property.

As well as the opportunity to immediate feedback to North falls team members at the events, feedback could also be provided via hard copy feedback forms, feedback postcards and by using a freepost option.

The project team ensured the information available was clearly set out on standing panels, written in easy to understand language and with supporting maps and photographs. There was also a

supplementary consultation booklet meaning that information could also be taken away and reviewed at home. The aim was to provide flexibility and facilitate input from a wide range of people.

4. INFORMATION PROVIDED AT CONSULTATION

The consultation ran for 53 days between 17 October and 9 December. Information was posted online using the project's existing website which linked to a purpose-built, integrated consultation portal. The information was replicated in the face-to-face events and there was a take-home version of broadly the same text. This information covered - and asked for feedback on - the following key project areas:

- Project need and rationale - the role of offshore wind in tackling climate change
- Offshore Transmission Network Review – the involvement of North Falls in the OTNR
- The development process – how Nationally Significant Infrastructure Projects are consented and the purpose of the PEIR
- Consultation with stakeholders – who will be consulted and how will North Falls coordinate with other infrastructure projects in the region?
- The wind farm – the key components of the project and the concept of a design envelope
- Offshore – the offshore site and cable corridor
- Landfall – the landfall search area between Clacton-on-Sea and Frinton-on-Sea
- Onshore – the onshore scoping area being considered for the cable route and substation location

5. PROMOTING THE CONSULTATION

The consultation launched on 17 October 2022, using the following promotional channels:

- An invitation postcard (see **Appendix A**) was distributed to all residential and business addresses within the following postcodes to let them know that the consultation was launching on Monday 17 October. These postcodes were chosen as they offered a good coverage of addresses along the coastal area being assessed for landfall, across the cable corridor being assessed for related onshore infrastructure and main traffic routes. These postcodes included CO7 7, CO7 8, CO11 1, CO11 2, CO12 5, CO13 0, CO13 3, CO13 9, CO15 3, CO15 4, CO15 5, CO15 6, CO16 0, CO16 6, CO16 8 and CO16 9. This meant approximately 12,000 addresses received direct posted notification of the consultation launch.
- Media releases were issued to local and regional press, trade publications and local radio stations at various stages of the consultation, attracting coverage widely (**see Appendix I**), including in the *Clacton and Frinton Gazette* on 2 November 2022. One press release was sent at the start of the consultation and a second as a reminder to people to take part around half-way through. Details of the press releases issued are set out in Table 1 and a full list of publications that each press release was issued to can be found at **Appendix I**.

Table 1: List of media releases issued to local, national and trade publications

Date issued	Title of media release	Summary
17 October 2022	RWE/SSE launches consultation on proposals for North Falls Offshore Wind Farm.	Confirms the launch of the non-statutory stage of public consultation.

28 November 2022	Final call for local people to have their say on North Falls Offshore Wind Farm.	Urges people to submit their feedback before the upcoming deadline.
------------------	--	---

- An email (**see Appendix D**) was distributed to all stakeholders (**see Appendix E**) on Monday 17 October, alerting them to the launch of the consultation and inviting them to take part. A further email was sent at the end of the consultation to thank all who responded for their participation (**see Appendix G**).
- A letter (**see Appendix H**) was sent to all relevant landowners, land agents and tenants (with land interests within the onshore search area) at the start of the consultation. The letter highlighted the launch of the consultation, invited landowners to take part in the consultation and signposted the project website for more information.
- Posters (**see Appendix B**) were also shared with venues hosting events and displayed on noticeboards
- A print advertisement appeared in three consecutive weekly editions of the *Clacton and Frinton Gazette* (**see Appendix J**) on Thursday 20 October, Thursday 3 November and Thursday 17 November.
- Versions of the advertisement also appeared as targeted online advertisements on the *Gazette's* Facebook page (**see Appendix C**) linking back to the project website. This campaign ran from 20 October 2022 to 16 November 2022 recording 107,255 total impressions and generating 385 click throughs to the project website.

Consultation events

A series of events enabled people to find out more about the proposals, speak to members of the project team from different disciplines, and ask questions.

To maximise opportunities to take part, both in-person and online events were held. This meant people who were unable to attend an in-person event had other opportunities to take part, including by attending webinars, or watching recordings of these online events via the website. Events were also held on different days and times, making sure that they were not always held during typical work days and/or hours. They were also on weekends so those with weekday commitments could attend.

Venues were chosen based on their proximity to the offshore and onshore elements of the proposals and their suitability in terms of the facilities offered, including disabled access and parking.

The events were timed to take place two weeks after consultation launch to provide people with an appropriate amount of notice to attend. The events programme was also scheduled so that they finished two weeks before consultation closed, to give people who attended the opportunity to process the detail and feedback their thoughts. A total of 227 attendees joined the events.

Details of each event are set out in **Table 2** below. Pictures from in-person events are available in **Appendix K**.

Table 2: Schedule of consultation events

Date (2022)	Time	Location	Attendees
Thursday 3 November	16:00 – 20:00	McGrigor Hall, 85 Fourth Ave, Frinton-on-Sea, CO13 9EB	63

Friday 4 November	16:00 – 20:00	Great Bromley Village Hall, Parsons Hill, Great Bromley, Colchester, CO7 7JA	44
Saturday 5 November	11:00 – 15:00	Tendring Village Hall, Tendring, Clacton-on-Sea, CO16 0BG	39
Friday 11 November	16:00 – 20:00	Thorpe Le Soken Women's Institute Hall, High Street, Thorpe Le Soken, CO16 0EF	42
Saturday 12 November	11:00 – 15:00	Ardleigh Village Hall, Station Road, Ardleigh, Essex, CO7 7RS	22
Tuesday 15 November	18:00 – 19:00	Online	9
Wednesday 23 November	18:00 – 19:00	Online	8

Following the conclusion of the online webinar sessions, a recording of each webinar was uploaded to the project website, (**see Appendix L**), so people could watch them on-demand.

A wide range of consultation materials was provided at the events, including:

- Large-scale display panels (**see Appendix M**) containing key information from the A4 28-page consultation booklet
- Consultation booklets (**see Appendix N**)
- Feedback forms (**see Appendix Y**) and feedback postcards (**see Appendix Z**)
- Fact sheets (**see Appendix Q**)
- A virtual reality headset to show what an offshore wind farm could look like (**Appendix O**)
- 3D interactive visualisation of onshore and offshore landscape views, as well as animated fly-throughs (**Appendix P**)
- A2 copies of project maps (**see Appendix R**)
- A colouring sheet of a wind turbine, for children to use (**see Appendix S**)
- Keep in touch cards (**see Appendix T**)
- North Falls branded recyclable pens and notepads (**See Appendix U**)
- External signage to direct members of the public to the venue (**see Appendix V**)

6. PUBLICATION OF THE CONSULTATION WEBSITE

North Falls has a main project website (www.northfallsoffshore.com) which explains the background to the project and sets out how the project will be developed through surveys, engineering, consultation, reporting and into determination. This main website is also the repository for all general information about the project, notices to mariners, documents, a gallery and useful background information.

For the consultation, the website was supplemented by an integrated consultation portal (<https://non-stat.northfallsoffshore.com/>) that remains live even after the consultation is over. This ensures the information presented and feedback received will be trackable and can be reviewed to show how the project has progressed. The consultation portal provided specific consultation-related information about the North Falls Offshore Wind Farm proposals, ways to provide feedback and a feature to

register for project updates. It also included a consultation map where people could leave comments on the exact location they were commenting about (see Appendix Y).

This portal was used for the introductory consultation and also for this second non-statutory consultation. Over the course of the 2022 consultation, the website received more than 4,669 visits from 1,389 unique users.

The information on the portal had drop-down menus, PDF maps, films, link to a 3D visualization and specific details covering each element of the project (detailed in section 2 of this document). In each case, the online consultation content was accompanied by feedback questions, inviting comments on specific areas of the project (**see Appendix Y**).

The feedback questions could be answered individually as people read the specific section on the portal, or collectively in one form, after the respondent had read all the information. They could also be downloaded, filled-in and either scanned and emailed or posted back. Numerous copies were received via the freepost return methodology. The actual questions posed were:

NEED AND RATIONALE

1. Do you have any general comments you would like to make about the UK's offshore wind energy ambitions?
2. Do you believe that more offshore wind will:
 - Reduce energy costs for the UK? Yes No
 - Improve the nation's energy security? Yes No
3. Do you believe that offshore wind has a key role to play in the UK's energy future?
 - Yes No
 - Why/why not?
4. Do you have any preference as to how North Falls could engage with and benefit the local community?

PROCESS

5. Do you have any comments or questions about North Falls' involvement with the Offshore Transmission Network Review?
6. Do you have any comments about the location of the proposed North Falls grid connection?
7. Do you have any questions about the development consent application process?

DEVELOPMENT PROCESS

8. Do you have any comments about the purpose of the Preliminary Environmental Information Report?

STAKEHOLDERS

9. Do you have any comments or suggestions about how North Falls is coordinating with other major infrastructure projects in the region?

THE WIND FARM

10. Do you have any comments or questions about the concept of a design envelope?

OFFSHORE

11. Do you have any comments or suggestions in relation to the offshore location or offshore infrastructure of North Falls? This could be comments on fisheries, components, marine ecology, offshore construction or anything else you feel relevant.

LANDFALL

12. Looking at the landfall compound zone, is there anything you feel would be relevant for our project to know about this particular area to help us select our temporary construction compound location?

ONSHORE

13. Do you have any comments or questions about the methodologies proposed to be used to construct the onshore underground cable?
14. Do you have any information about the onshore substation zone that could help in finalising the location for the onshore substation?
15. Do you have any comments or suggestions in relation to the onshore cable route for North Falls? This could be comments on the route, onshore ecology or anything else you feel relevant.
16. Although not feasible under existing regulations, do you have any comments or questions on the concept of an offshore grid connection or its associated onshore infrastructure?

In addition, an interactive map (**see Appendix X**) of the offshore and onshore areas enabled site visitors to drop pins on specific map points, adding comments or uploading documents by way of location-specific feedback.

7. BRIEFINGS CONDUCTED WITH STAKEHOLDERS

On Saturday 5 November, ahead of the public consultation event at Tendring Village Hall, an in-person briefing with local stakeholders was set-up. An email inviting councillors (**see Appendix F**) was issued on Tuesday 18 October.

A total of 43 councillors were invited to attend from relevant wards at Tendring District Council. Four councillors attended: Cllr Michael Skeels, Cllr Peter Harris, Cllr Zoe Fairley, and Cllr Chris Amos.

Feedback from the briefing with councillors covered a range of topics, including; battery storage facility for the project, possibility of future expansion to the project, use of land for farming and agriculture, impact of proposed cable route and to consider detailed guidance in next consultation about electromagnetic fields.

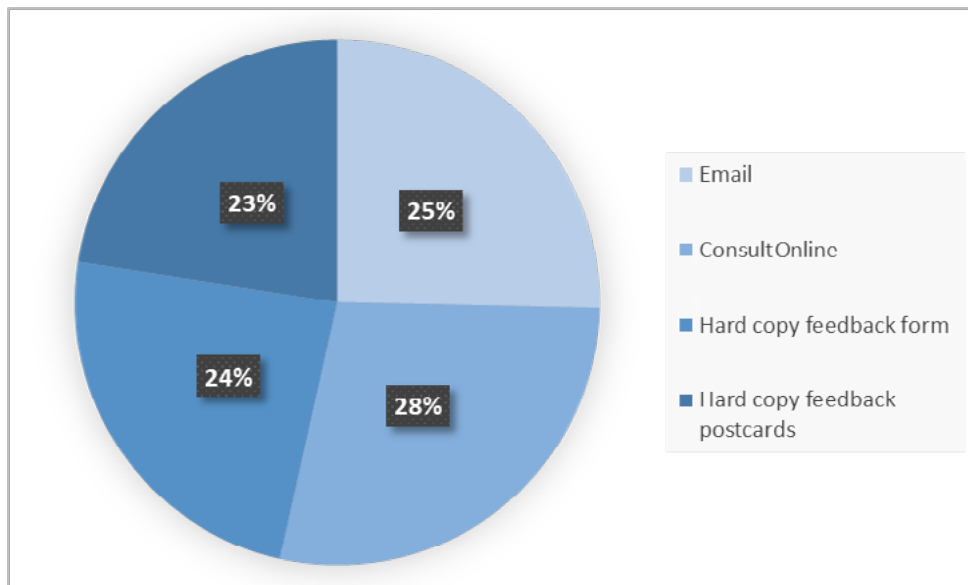
8. NUMBER OF RESPONSES RECEIVED

A total of 71 pieces of feedback were received – the feedback comprised:

- 18 emails
- 20 ConsultOnline submissions
- 17 hard copy feedback forms
- 16 hard copy feedback postcards

A pie chart of the types of feedback received during non-statutory consultation for North Falls Offshore Wind Farm options is presented below in Figure 2.

Figure 2: Diagram outlining types of feedback received during non-statutory consultation.



9. SUMMARY OF RESPONSES RECEIVED

Feedback form responses

Q1. Do you have any general comments you would like to make about the UK's offshore wind energy ambitions?

More than half of respondents indicated support for offshore wind, particularly as it means a move away from fossil fuels and has the potential to reduce pollution. However there were a number of concerns around its reliability and the continued need for other generation sources, as well as its impact on marine life and how it works in a harsh offshore environment. In terms of the project itself, a similar number were supportive (around 50%) with the key theme being that they would like to see it delivered quicker. Some other respondents were worried that the technology would be outdated by the time construction is complete, were concerned about the onshore grid connection location and also about impacts on the agricultural land. There was also a suggestion that energy companies should be run as not for profit organisations.

Q2a: Do you believe that offshore wind will: reduce energy costs for the UK?

Of those who answered this question there was an even 50/50 split between yes and no.

Q2b: Do you believe that offshore wind will: improve the nation's energy security?

78% of respondents said they believed offshore wind would improve the nation's energy security.

Q3a: Do you believe that offshore wind has a key role to play in the UK's energy future?

85% of respondents said they believed offshore wind has a key role to play in the UK's energy future.

Q3b: Why / why not?

The reasons for a positive response to this question included the fact that as the UK is a windy island nation it makes sense to use its natural resources. The other key points from supporters were that it: contributes to a reduction in the use of fossil fuels, is a proven technology and has well-established benefits. Of those who said no, there were concerns around the visual impact and what happens at the end of the turbine lifecycle.

Q4: Do you have any preference as to how North Falls could engage with and benefit the local community?

There was a range of responses to this question, which will be taken into consideration by the project as work progresses. From a socio-economic perspective these included the use of local companies, and the development of apprenticeship and trainee schemes to create career pathways. From a wider community perspective there were suggestions around supporting and working closely with local artists and theatre groups, sponsoring community events and projects, protecting wildlife and providing charitable donations. In terms of engagement, future consultation events and the provision of regular information was requested, along with genuine consideration of the feedback provided.

Q5: Do you have any comments or questions about North Falls' involvement with the Offshore Transmission Network Review?

Most people had no comment on this question partly due to not being exactly clear on what the OTNR is. However those who did respond would mostly like to see more effort on a potential offshore connection option. There was a general understanding that North Falls was given a grid connection point by National Grid but also questions on how the project could influence the location of that connection. The fact that the proposed cables will be underground was positively received but this was counter-balanced by concerns around the visual and other impacts of the onshore substation. Updates on the progress of the OTNR were requested.

Q6: Do you have any comments about the location of the proposed North Falls grid connection?

Of those who responded to this question, the main theme was around what is seen as a detour of the East Anglia Green route into Arleigh and the preference either for a connection elsewhere, such as closer to the coast or nearer London, or the use of an offshore grid connection option. There was some concern around the use of agricultural land for the substation site, and need to protect local bird and wildlife, and a query on the landscaping proposed around the substation. The remainder of the respondents used this question to voice general support to the project.

Q7: Do you have any questions about the development consent application process?

There were few questions about the development consent application process, but of those questions asked, they covered the full spectrum from saying the process was too long and should be reduced to those wondering about how decisions are made, what is the level of local authority involvement and whether it was a waste of time. There were some comments around landowner engagement that will be taken on board by the project.

Q8: Do you have any comments about the purpose of the Preliminary Environmental Information Report?

It was stated that the PEIR needs to be well-considered, take a long-term perspective and be reviewed externally. There was the call for greater cooperation with Five Estuaries (see also next question), for cumulative impacts to be included and for all materials to be made available online. There were concerns around how local comments will be incorporated and whether the information in the report would be either insufficient or that decisions have already been made. This question also received a very specific request to replace cast iron water main near Thorpe-le-Soken.

Q9: Do you have any comments or suggestions about how North Falls is coordinating with other major infrastructure projects in the region?

The main theme to come from responses to this question was around the need for increased coordination with Five Estuaries, more detail of exactly how the two projects are working together, specifics on the cooperation and more on the cumulative impacts (also with National Grid's East Anglia Green project). The cumulative impact responses related to both the construction work and also to the fact the substations would be in one area and how that would affect the nearby community.

Q10: Do you have any comments or questions about the concept of the design envelope?

There were only a handful of responses to this question with the gist being that while the design envelope presents the worst case scenario, it was important to try to avoid the worst case. To that end there was also the suggestion to narrow the design envelope.

Q11: Do you have any comments or suggestions in relation to the offshore location or offshore infrastructure of North Falls? This could be comments on fisheries, components, marine ecology, offshore construction or anything else you feel relevant.

The feedback from this question primarily related to minimising impacts on marine life and the offshore ecosystem, with a specific focus on being aware of cod spawning sites near the offshore site. Some respondents felt the project's presence may help reduce the likelihood of overfishing. There were some suggestions around use of recyclable turbine blades, some generally supportive feedback and one comment around using an alternative sub-sea connection that comes to land elsewhere.

Q12: Looking at the landfall compound zone, is there anything you feel would be relevant for our project to know about this particular area to help us select our temporary construction compound location?

Half of the respondents did not respond to this question while the other half had a wide range of comments including those related to construction concerns such as: avoiding any closures of local footpaths or bridleways; keeping heavy construction traffic off residential roads; and minimising construction noise. There was also acknowledgement of the beauty of the local area and that care should be taken to 'put things back how you found them'. Awareness was raised of the area's susceptibility to flooding and the possible presence of WWII unexploded ordnances. Finally there was also the request to minimise the extent of any sailing restrictions.

Q13: Do you have any comments or questions about the methodologies proposed to be used to construct the onshore underground cable?

Again half of the respondents were happy with the proposed methodologies and had limited feedback other than to be comfortable with horizontal-directional drilling as a process and relieved that the cables would be buried for their full length. In terms of concerns with the proposed methodologies, the main issues were around the impact on the farmland and countryside during construction, closure of any footpaths or bridleways and also any potential noise or other pollution. There was also a comment around any longer-term impacts on agricultural land into the future.

Q14: Do you have any information about the onshore substation zone that could help in finalising the location for the onshore substation?

Respondents not living in the area close to the proposed substation location did not tend to comment on either the location or surrounding area as they were either unfamiliar with the area or had no issues/felt it looked reasonable. Those who did comment were concerned it was not a suitable location for electrical infrastructure and felt it would add negatively to the existing 'wirescape'.

Q15: Do you have any comments or suggestions in relation to the onshore cable route for North Falls? This could be comments on the route, onshore ecology or anything else you feel relevant.

This question received some very specific and useful responses that included suggestions around: replacing a cast-iron water main; ensuring a known dormice hedge route remains undisturbed and not blocking, diverting or impacting a specific drainage ditch. There were further calls for coordination with the Five Estuaries project in terms of utilising the same route and for reduced impacts on agricultural land.

Q16: Although not feasible under existing regulations, do you have any comments or questions on the concept of an offshore grid connection or its associated onshore infrastructure?

There were questions around why the existing regulations mean an offshore grid connection is not feasible, which relates to current government legislation and planning regulations that are under review as part of Offshore Transmission Network Review. While most did not answer this question, the responses from those who did were primarily positive to the concept providing it did not impact marine life or create too much offshore infrastructure or create offshore restriction zones.

Issues raised and how we are dealing with them

Numerous issues were raised during the consultation that will be covered more fully in the North Falls Preliminary Environmental Information Report which is now under production and will be subject to consultation in 2023. This is a high level summary of the key issues raised, all of which will be considered as the proposals are progressed.

Issue raised during consultation		What we are doing
Construction traffic	Respondents raised concerns around construction traffic, recognising the local area has many narrow roads unsuitable for an increase in traffic. Particularly the likes of HGVs in areas such as the village of Thorpe-le-Soken.	North Falls is working on an outline Construction Traffic Management Plan (CTMP) with details of how HGV and other vehicle movements will be to controlled, monitored and enforced during construction. Amongst other details it will include how accesses and offsite highway works will be designed and how a temporary haul road within the construction corridor will minimise the amount of traffic on the local road network.
Flooding	Points were raised during the consultation around flooding, both the possibility of it having an impact on construction, and conversely the impact construction could have on flooding.	North Falls has carried out assessments on geology, ground conditions, hydrology and flood risk for each of the project's construction, operation and decommissioning phases. This information will inform a Flood Risk Assessment, which will establish whether the onshore infrastructure may be affected by current or future flooding, whether it will increase the flood risk elsewhere and what mitigation can be implemented to reduce it.
Access to footpaths, bridleways and the coastal promenade during construction	People wanted to know what impact construction might have on recreational routes, such as the promenade between Frinton-on-Sea and Holland-on-Sea, bridleways and footpaths along the cable route.	We are identifying each recreational route in the area of our proposed construction works and will incorporate plans to minimise disruption either through use of specific construction techniques, alternative routes or by careful timing of activities.

Water main north of Thorpe Road	A specific point was brought up by a few respondents relating to a cast iron water main north of Thorpe Road	As the water main north of Thorpe Lane is owned by the local water company, it would not be within the project's remit to remove or replace it. However we will liaise with the water company so they are aware of our plans and the feedback we have received during consultation.
Land drainage	Some comments received related to water drainage in the area, with specific mention of a drainage ditch at Damants Farm Lane.	A land drainage consultant will be appointed to develop pre-and post-construction drainage plans in consultation with local landowners for all affected areas of the cable route. Additionally, land drainage systems will be maintained during construction and land drainage would be reinstated once construction is complete as part of the reinstatement phase.
Landscaping around substation	Respondents asked about how the substation would be landscaped as there are concerns around its visual impact. There were also requests for more visualisations to understand the size and how it could look.	We are following National Infrastructure Commission guidance (published February 2020), which sets out design principles for nationally significant infrastructure projects such as North Falls. These mean we will consider the cumulative impacts of other proposed substations and factors including substation orientation, fencing and associated landscaping and vegetation such as native woodland planting and hedgerows. Our site selection principles are also aligned to the Horlock Rules guidance on siting and design of substations. North Falls has noted requests to better understand how the substation could look and will include more photographs with examples of similar substations and visual representations in future consultation(s).
Local ecology, birds and wildlife	Some who provided consultation responses expressed concern about the impacts of construction on the local area's ecology, wildlife and birds, with a particular focus on any endangered species.	Comprehensive ecological surveys have been undertaken across the whole proposed development area recording the presence of any habitat, bird species or wildlife, including insects, that is either protected in law or notable due to its rare, scarce or vulnerable status. This information is being used to inform the baseline for planning and full details of how it has been considered will be included in the preliminary environmental information report which we will consult on this year.
Use of HDD during construction	While most feedback indicated people were content with the use of horizontal directional drilling during construction, there were some questions around the process and potential for noise or pollution.	More details around the specifics of the HDD process will be included in the upcoming PEIR but the concerns have been noted and will be addressed. For example by the use of an inert clay as drilling fluid and pre-work noise assessments to ascertain the need for temporary noise mitigation, which would be put in place for the duration of activity.
Communication during construction	There were requests for clear communications during the construction period.	We can confirm this will be a priority to ensure the local community is aware of what is happening and when. Communications methodologies will include direct letters,

		newsletters and eNews, a 24-hour phone line and local briefings.
Grid connection location	Numerous respondents, particularly those potentially impacted, expressed opposition to the location of the grid connection near Ardleigh. The concerns were around its size, cumulative impacts, and distance from electricity users. While not part of the North Falls remit, there were also concerns around the infrastructure related to East Anglia GREEN project.	North Falls has noted all the objections to the existing location and has shared feedback with National Grid, who provided the project with its grid connection. While North Falls continues to work towards the existing grid connection location as that is the only current option, in parallel the project remains committed to the OTNR process with more details on that below.
Horsley Cross car boot sale	More than one consultee mentioned the Horsley Cross car boot sale as something that could be impacted by the proposed cable route.	The fact this event happens each Friday during summer has been noted and will be referenced in our development consent order application. While the exact cable route has yet to be confirmed, if it is close to the car boot sale site, we would work with organisers to minimise any potential disruption from construction activity.
Residential gardens	There was concern for some local residents about the cable route potentially going through back or front gardens.	We have reviewed the initial route which did include corners of some residential gardens, however it has now been narrowed down and amended to completely avoid residential gardens.
Offshore grid connection	A number of people asked why we cannot just connect the project offshore and why that is not being considered.	There are numerous complex changes needed to regulations and legislation in order for offshore wind farms to be able to connect their projects offshore. North Falls continues to play a role in the Offshore Transmission Network Review which aims to deliver the necessary changes. As such we have committed to exploring coordinated network designs with along with four other projects in East Anglia: Five Estuaries, National Grid Electricity Transmission's Sea Link, and National Grid Ventures' EuroLink and Nautilus, and we continue to work together on this process.
Cooperation with Five Estuaries	There were a number of requests from those responding to the consultation for cooperation with Five Estuaries as both projects are in the same location.	Due to the location of the two projects, North Falls will continue to work closely with Five Estuaries on key elements such as cable corridor selection (to optimise both onshore routes), onshore substation location, environmental surveys and by sharing consultation feedback.
Community support	The consultation invited ideas as to how it could support the local community in future.	Plenty of good ideas about how North Falls can support the local community - such as sponsorships and local involvement - were submitted and will be explored as the project progresses.

Frequently asked questions

For more details and to look at specific frequently asked questions and their answers, there is also an updated section on the North Falls website.

Local involvement
<p>Will the project's construction or operation impact local sailing?</p> <p>The ongoing landfall site selection and engineering design process will take into account local stakeholders including recreational sailors and for example, timing of their regular competitions. The aim of our planning will be to ensure impacts in the nearshore project area are minimised.</p> <p>When there is likely to be nearshore activity during construction, we would liaise with potential stakeholders in advance. Closer to the works dates, details and accurate location data of all activity will be communicated via notices to mariners and Kingfisher bulletins. This would also be the approach for any work required during the wind farm's operation.</p>
<p>How can the local supply chain and local companies benefit from this project?</p> <p>An early study indicated that for the onshore construction phase, local small-to-medium enterprises could benefit from contracts totalling more than £250 million. This initial assessment was built on by a specific socio-economic benefit study that has found the gross value add (GVA) for the local area could be up to £400 million.</p> <p>Local companies will be well placed to take advantage of the opportunities which will be promoted via both the project and its Tier 1 and 2 suppliers as the project progresses. Initiatives such as supply chain events, supplier registration and facilitated sessions will be used to maximise transparency of opportunities.</p>
<p>What will you do to ensure local people are well-placed to have opportunities with the project?</p> <p>There will be a wide range of local jobs during the lifetime of the project, from highly skilled to more manual roles (direct, indirect and induced), working with the project itself, as well as with local suppliers and contractors across the whole supply chain. Our initial socio-economic benefit study has put the total number of full-time equivalent local jobs at around 4000 over the lifetime of the project. North Falls will implement careers awareness, training and skills initiatives with local schools, educational institutions and training providers. These are likely to include apprenticeships, internships and other initiatives.</p>
Grid connection and cable route
<p>Will the cable route go through any residential gardens?</p> <p>The onshore cable route has been designed to avoid crossing residential properties or gardens.</p>
<p>Why don't you just have an offshore grid connection?</p> <p>There are a number of complex commercial and regulatory hurdles that need to be overcome for the project to be able to connect offshore. These are currently being reviewed under the Offshore Transmission Network Review (OTNR) and Offshore Coordination Support Scheme (OCSS).</p>

Some examples of changes needed include: new regulations around grid charging; revised rules related to the government's contract for difference auction to allow for joint bids; or changes to the current offshore transmission owner (OFTO) obligations. Other changes relate to how different projects are allowed to work together, for example, if one is required to make anticipatory investments to oversize their infrastructure so a later second project can benefit.

So while the OTNR and OCSS work on these complex issues is ongoing, we continue to progress the radial connection option as it is currently the only one that is feasible under existing regulations and legislation.

What is the Offshore Transmission Network Review, and are you involved?

The Offshore Transmission Network Review (OTNR) brings together key stakeholders involved in the delivery of offshore wind, to coordinate interconnectors and offshore networks and their connections to the onshore network. This involves bringing forward any legislation or regulations needed to enable this coordination. It also asks participants to consider the existing regime and how this influences the design and delivery of transmission infrastructure. Basically it aims to ensure that the transmission connections for offshore wind farms are delivered in the most appropriate way and with the appropriate balance between environmental, social and economic costs.

North Falls is supporting the OTNR which aims to deliver improvements in the way offshore wind generation connects to the onshore transmission network and to facilitate a more supportive approach for interconnectors (including multi-purpose interconnectors) and other offshore transmission.

North Falls along with four other projects in East Anglia: Five Estuaries, National Grid Electricity Transmission's Sea Link, and National Grid Ventures' EuroLink and Nautilus have committed to exploring coordinated network designs. North Falls is also involved with the associated Offshore Coordination Support Scheme (OCSS).

How are you cooperating with Five Estuaries?

Five Estuaries is the proposed extension to the operational Galloper Offshore Wind Farm, which has also been provided with a grid connection at the East Anglia Connection Substation. Due to the location of the two projects, we have been working closely with Five Estuaries on key elements such as cable corridor selection (to optimise both onshore routes), onshore substation location, environmental surveys and by sharing consultation feedback.

Coordination and cooperation will continue throughout the development of both projects and may enable elements of joint delivery should the technical and commercial conditions make it practical. The primary goal of this coordination will be to reduce the potential impacts of the two projects on stakeholders and local communities.

Both projects are also exploring grid-related opportunities together with other infrastructure projects as part of the Offshore Transmission Network Review (see above OTNR FAQ).

Local onshore and marine environment

What landscaping will be used around the proposed onshore substation?

National Infrastructure Commission guidance (published February 2020) sets out design principles for nationally significant infrastructure projects such as North Falls. These include the need to consider the

cumulative impacts of other proposed substations and factors including substation orientation, fencing and associated landscaping and vegetation. North Falls site selection principles are also aligned to the Horlock Rules guidance on siting and design of substations.

At this stage in the project's development, the layout of the substation is not known, however once this is confirmed, an outline landscape design will be developed to ensure that appropriate and sensitive landscaping is developed around the substation. This will likely include the use of landscaping bunds, areas of native woodland planting and hedgerows to assist in integrating the substation operational footprint into the wider landscape fabric of farmland, hedgerows and areas of woodland.

How do you ensure the protection of local birds and wildlife?

As a first step, a comprehensive set of ecological surveys is undertaken across the proposed development area. The presence of any species or habitat either protected in law or notable due to its rare, scarce or vulnerable status, is incorporated during the planning of the cable route and other onshore infrastructure.

If feasible they will be avoided, or else measures to protect them will be included in the plans, for example, ensuring buffers around woodland. Where constraints cannot be avoided, proven mitigation measures will be adopted such as: scheduling work outside sensitive periods, ecological supervision, use of low noise machinery and acoustic screening of sensitive areas.

The project will seek to ensure at least 10% biodiversity net gain across the onshore area, meaning it will enhance the local environment in ways that will be agreed in consultation with relevant stakeholders.

What do you do to protect marine life during construction?

North Falls will be subject to full environmental impact and habitats regulations assessments, undertaken in accordance with current regulations. These assessments will determine any potential impacts of construction on marine life, and mitigation where applicable.

When an offshore wind project receives consent, it is granted with numerous stringent conditions related to how the potential impacts of the project are to be mitigated. These mitigation measures are determined in consultation with stakeholders, such as the local fisheries industry, and government bodies such as the Marine Management Organisation and Natural England. It is too early in the project to specify the measures for North Falls however from experience they will include actions to minimise impacts on marine mammals and fish. It would be a legal requirement that the conditions are satisfied in order for construction to proceed.

How will the local coastal heritage be protected?

A detailed assessment of the location of heritage assets along the Clacton to Frinton coast has been undertaken as part of the project's site selection work, and the project has sought to avoid any potential impacts upon such features as far as possible. The project is proposing to use horizontal directional drilling to install cables at the cable landfall which will avoid sensitive coastal heritage features, and there will be no permanent infrastructure at the coast.

What will happen at the end of the project's lifecycle?

The decommissioning policy for the project, including its components and infrastructure, has not yet been finalised. It is recognised that legislation and best practice change over time so the detail and

scope is likely to be determined by the relevant legislation and guidance at the time of decommissioning, in agreement with the regulator. However it is likely the components and equipment will mostly be removed, reused or recycled wherever possible.

Construction

How will you manage construction traffic?

As a first step, a Construction Traffic Management Plan (CTMP) containing details of measures to control, monitor and enforce HGV movements will be developed for the project. This will also include details of how accesses and offsite highway works will be designed and managed to minimise the impacts of HGV movements on local residents. Also incorporated will be details of car journeys by personnel and focus on reducing single occupancy trips.

More specifically, to minimise the amount of traffic on the local road network during construction, a temporary haul road would be installed along the onshore cable construction corridor to provide safe access for construction vehicles, thus reducing the requirement for vehicles to travel via public highways.

Each public road that would have HGVs travelling on them during construction would either already be suitable for two-way HGV movements, or modified in advance of construction to enable this.

Further traffic management plans that need to be approved by the Council will specify exact requirements for example there may be a ban on construction traffic through certain areas.

How far away will you work from existing houses?

During the planning of the project's onshore cable corridor, the team has sought keep the route at least 250 metres from residential properties where other constraints allow. Where constraints mean that the construction footprint needs to be closer to residential properties than 250m, other mitigation measures to manage and minimise construction noise and dust will be implemented.

Will footpaths and bridleways be closed during construction?

Where possible, footpaths and bridleways will be kept open to minimise impacts to recreational users. Where a footpaths or bridleway needs to be crossed by the project, a suitable temporary diversion will be created for the duration of work in that area. A full list of temporary diversions will be agreed with Tendring District Council in advance, and information on the duration and proposed alternative routes will be publicly circulated through site notices and local media.

How will you ensure drainage is not affected by construction, particularly around Damants Farm Lane where there is a drainage ditch?

North Falls will develop pre-and post-construction drainage plans in consultation with local landowners for all affected areas of the cable route. Additionally, land drainage systems will be maintained during construction and land drainage would be reinstated following completion of construction works during the reinstatement phase.

Are you aware of the cast iron water main north of Thorpe Lane, and if so, can you replace it as part of your construction?

As the water main north of Thorpe Lane is owned by the local water company, it would not be within the project's remit to remove or replace it. However we will liaise with the water company so they are aware of our plans and the feedback we have received during consultation.

Does HDD create noise or pollution?

The horizontal directional drilling process uses an inert clay as a drilling fluid, so there would be no pollutants released during the work. Noise assessments are undertaken in advance of drilling and if any unacceptable noise levels are predicted, then mitigation such as noise hoarding will be put in place to ensure that temporary noise effects are kept to a minimum.

Technical

What type of turbines will the project use?

North Falls has not yet chosen its turbines and, as wind turbine technology continues to advance, it is likely that the project will use turbines that are currently not on the market. The development consent order application will therefore include a range of options, from turbines available today to projected future technology, and will assess the worst case scenario for each impact. This is standard consenting practise, particularly in the offshore wind industry. It is referred to as the "Rochdale Envelope" approach. The turbines, and other technology and infrastructure, will be selected, post-consent to ensure the project can take advantage of the latest developments at the time.

General

Will you store the electricity?

No the electricity generated by North Falls will not be stored but rather will directly enter the national grid. Additional storage, for example a battery facility, is not part of our project proposals.

What are the long-term health impacts of living near a substation or other electrical infrastructure?

Firstly, North Falls is committed to best practice health and safety in all of our activities and will comply with all industry standards and Government regulations when siting and designing our electrical infrastructure. When it comes to health impacts of living near electrical infrastructure, such as substations or buried cables, people generally refer to electric and magnetic fields (EMFs), which are invisible sources of energy associated with the use of electrical power and present everywhere in our environment.

Wherever electricity is generated and used there will be EMFs. The typical exposure on an ongoing basis from domestic electrical equipment in the home would be higher than those our substation or near our underground cables would be likely to contribute to the overall EMF background at residents' properties. Electric fields can be effectively screened while magnetic fields reduce rapidly with distance from the source. By use of screening and ensuring our infrastructure is sited at a distance from residential properties, any electric and magnetic fields would be extremely low, or negligible, and would fall well under the accepted UK guidelines.

Will the project impact house prices?

As construction work at landfall and along the cable route will be temporary and there will be no above-ground visible infrastructure, we would not expect any impact on house prices at landfall or along the

route. All cables will be buried underground. The substation will be the only permanent above ground feature and North Falls will follow the Horlock Rules for its siting and design to keep visual, noise and other environmental effects are kept to a reasonably practicable minimum.

Will the turbines be visible from shore?

The answer to this depends on from where, the time of day and the weather conditions. But assuming from the closest land point to the closest turbines, there will be varying degrees of visibility. The North Falls project team recognise visual impact can be a concern for some stakeholders, which will certainly be taken into account in the ongoing design process for the project. The size and shape of the offshore wind farm array areas are currently being reviewed. This review will take into account various aspects including seascape, with a view to reducing the visual impact on the coast where practicable. As a [preview you can see our 3D visualisation](https://www.3dwtech.co.uk/dashboard/rwe/north-falls/portal-en/) of the proposed project from specific onshore viewpoints here: <https://www.3dwtech.co.uk/dashboard/rwe/north-falls/portal-en/>

Landowners and agriculture

How do you work with those whose land you are impacting (farmers/tenants)?

The Code of Construction Practice mentioned in the question above outlines in detail the project's undertakings related to construction and provides a full Construction Method Statement. Construction activities will be monitored and overseen by an environmental clerk of works and an agricultural liaison officer, supported by other specialists when necessary to ensure landowners are consulted and communicated with in detail throughout any works.

Unless there is an emergency, working hours will be limited to between 0700 and 1900 hours on Monday to Friday and between 0700 and 1300 on Saturday. No works are currently proposed on Sundays or bank holidays, and would only be included in exceptional circumstances.

In terms of both pre-and post-construction, some liaison will be required around the jointing bays, which are underground structures placed at regular intervals along the cable route. Their locations will be determined during the detailed design stage though they are generally situated between 500m and 1700m apart. Their role is to connect sections of cable and during construction they facilitate the installation of the cables into the buried ducts. During the wind farm's operation, link boxes provide access into the jointing bays for maintenance of the cables, with entry through a manhole protected by a concrete lid at ground level.

How will you ensure the agricultural land is not negatively impacted by the works and there is no long term impact?

A Schedule of Condition will be undertaken prior to entry to assess the soil composition and depth of top soil. This information will be used during reinstatement to ensure the soils are returned to their former condition suitable for previous use. Sub soil and top soil will be extracted and stored separately to prevent contamination.

Contractors will follow DEFRA's 2009 Construction Code of Practice for the Sustainable Use of Soils on Construction Sites PB13298 or the latest relevant available guidance, which will aim to ensure the working area is reinstated to as it was prior to construction. Drainage systems will be maintained before, during and after construction. Prior to the works, a drainage consultant will undertake an assessment of the existing drainage system as a baseline. If alterations need to be made to that system, the drainage consultant will prepare a scheme for the required drainage works on the land affected by the construction works and also how it will be subsequently restored.

Once the main construction works are completed, the cable corridor will be reinstated and handed back to the landowner. Reinstatement may include but not be limited to: removing haul roads, installation of further drainage if necessary, reinstatement of topsoil and removal of fencing and temporary access arrangements in place. Due to their nature, reinstatement works will only be carried out where the weather permits.

Appendices

PRE-EVENT PUBLICITY

Appendix A - Postcard mailer


NORTH FALLS
Offshore Wind Farm

**INVITATION TO HAVE YOUR SAY
ON OUR PROPOSALS FOR
NORTH FALLS OFFSHORE WIND FARM**

We'd like to invite you to give your views on our proposals for North Falls -
an offshore wind farm being developed more than 20km off the East Anglia coast.

North Falls is a proposed extension to the existing Greater Gabbard Offshore Wind Farm. It has an offshore array area of 150km² in the southern North Sea. Onshore, a grid connection in Tendring, Essex has been offered to the project by National Grid.

As well as generating green energy, contributing to the UK's net zero ambitions and providing energy security, North Falls will bring numerous local benefits by way of jobs, boosting the local economy and providing community support.

To follow on from an initial consultation held in October 2021, we would like to present our updated proposals for feedback before we continue to the next phase of development, the preparation of our Preliminary Environmental Impact Report, a key part of our development application.

Our latest consultation will run from Monday 17 October until Friday 9 December and will include online and face-to-face opportunities to find out more and share your comments. As well as a consultation portal there will be five consultation events and two online webinars.

HOW TO GET INVOLVED IN THE NORTH FALLS CONSULTATION:

Consultation portal
Go online to find out more about our proposals, submit questions and provide us with your thoughts: www.northfallsoffshore.com

In person events

Date	Time	Venue
Thursday 3 November 2022	4pm to 8pm	McGrigor Hall, 85 Fourth Ave, Frinton-on-Sea, CO13 9EB
Friday 4 November 2022	4pm to 8pm	Great Bromley Village Hall, Parsons Hill, Great Bromley, Colchester, CO7 7JA
Saturday 5 November 2022	11am to 3pm	Tendring Village Hall, Tendring, Clacton-on-Sea, CO16 0BG
Friday 11 November 2022	4pm to 8pm	Thorpe Le Soken Women's Institute Hall, High Street, Thorpe Le Soken, CO16 UFF
Saturday 12 November 2022	11am to 3pm	Ardleigh Village Hall, Station Road, Ardleigh, Essex, CO7 7RS

Webinars
We will also be hosting two webinars starting at 6pm on Tuesday 15 November and Wednesday 23 November. To register to attend, please visit our website.

CONTACT US
Telephone: 0800 254 5340
Email: contact@northfallsoffshore.com
Post: FREEPOST North Falls

THE DEADLINE FOR COMMENT IS FRIDAY 9 DECEMBER 2022


NORTH FALLS
Offshore Wind Farm
 | 

Appendix B – A4 poster





NORTH FALLS
Offshore Wind Farm

INVITATION TO HAVE YOUR SAY ON OUR PROPOSALS FOR NORTH FALLS OFFSHORE WIND FARM

We'd like to invite you to give your views on our proposals for North Falls - an offshore wind farm being developed more than 20km off the East Anglia coast.

North Falls is a proposed extension to the existing Greater Gabbard Offshore Wind Farm. It has an offshore array area of 150km² in the southern North Sea. Onshore, a grid connection in Tendring, Essex has been offered to the project by National Grid.

As well as generating green energy, contributing to the UK's net zero ambitions and providing energy security, North Falls will bring numerous local benefits by way of jobs, boosting the local economy and providing community support.

To follow on from an initial consultation held in October 2021, we would like to present our updated proposals for feedback before we continue to the next phase of development, the preparation of our Preliminary Environmental Impact Report, a key part of our development application.

Our latest consultation will run from **Monday 17 October until Friday 9 December** and will include online and face-to-face opportunities to find out more and share your comments. As well as a consultation portal there will be five consultation events and two online webinars.

HOW TO GET INVOLVED IN THE NORTH FALLS CONSULTATION:

Consultation portal
Go online to find out more about our proposals, submit questions and provide us with your thoughts: www.northfallsoffshore.com

In person events

Date	Time	Venue
Thursday 3 November 2022	4pm to 8pm	McGrigor Hall, 85 Fourth Ave, Frinton-on-Sea, CO13 9EB
Friday 4 November 2022	4pm to 8pm	Great Bromley Village Hall, Parsons Hill, Great Bromley, Colchester, CO7 7JA
Saturday 5 November 2022	11am to 3pm	Tendring Village Hall, Tendring, Clacton-on-Sea, CO16 0BG
Friday 11 November 2022	4pm to 8pm	Thorpe Le Soken Women's Institute Hall, High Street, Thorpe Le Soken, CO6 0EF
Saturday 12 November 2022	11am to 3pm	Ardeleigh Village Hall, Station Road, Ardeleigh, Essex, CO7 7RS

Webinars
We will also be hosting two webinars starting at 6pm on **Tuesday 15 November** and **Wednesday 23 November**. To register to attend, please visit our website.

CONTACT US

Telephone: 0800 254 5340
 Email: contact@northfallsoffshore.com
 Post: FREEPOST North Falls



THE DEADLINE FOR COMMENT IS FRIDAY 9 DECEMBER 2022



Appendix C - Online advertisements

Animated 1

INVITATION TO HAVE YOUR SAY ON OUR PROPOSALS FOR NORTH FALLS OFFSHORE WIND FARM

  | **RWE** [FIND OUT MORE](#)

Consultation will run from Monday 17 October until Friday 9 December 2022 and will include online and face-to-face opportunities to have your say.

Animated 2

Consultation will run from **Monday 17 October** until **Friday 9 December 2022** and will include online and face-to-face opportunities to have your say.

INVITATION TO HAVE YOUR SAY ON OUR PROPOSALS FOR NORTH FALLS OFFSHORE WIND FARM

  | **RWE** [FIND OUT MORE](#)

Animated 3

INVITATION TO HAVE YOUR SAY ON OUR PROPOSALS FOR NORTH FALLS OFFSHORE WIND FARM


NORTH FALLS
Offshore Wind Farm

Consultation will run from Monday 17 October until Friday 9 December 2022 and will include online and face-to-face opportunities to have your say.

 | **RWE** [FIND OUT MORE](#)

Animated 4

INVITATION TO HAVE YOUR SAY ON OUR PROPOSALS FOR NORTH FALLS OFFSHORE WIND FARM

Consultation will run from Monday 17 October until Friday 9 December 2022 and will include online and face-to-face opportunities to have your say.


NORTH FALLS
Offshore Wind Farm


 | **RWE** [FIND OUT MORE](#)


Animated 5

INVITATION TO HAVE YOUR SAY ON OUR PROPOSALS FOR NORTH FALLS OFFSHORE WIND FARM

Consultation will run from Monday 17 October until Friday 9 December 2022 and will include online and face-to-face opportunities to have your say.

[FIND OUT MORE](#)


NORTH FALLS
Offshore Wind Farm

 | **RWE**

Animated 6

INVITATION TO HAVE YOUR SAY ON OUR PROPOSALS FOR NORTH FALLS OFFSHORE WIND FARM


NORTH FALLS
Offshore Wind Farm

Consultation will run from Monday 17 October until Friday 9 December 2022 and will include online and face-to-face opportunities to have your say.

 | **RWE** [FIND OUT MORE](#)

Animated 7

INVITATION TO HAVE YOUR SAY ON OUR PROPOSALS FOR NORTH FALLS OFFSHORE WIND FARM

Consultation will run from Monday 17 October until Friday 9 December 2022 and will include online and face-to-face opportunities to have your say.

  | **RWE** [FIND OUT MORE](#)

Animated 8

INVITATION TO HAVE YOUR SAY ON OUR PROPOSALS FOR NORTH FALLS OFFSHORE WIND FARM

Consultation will run from Monday 17 October until Friday 9 December 2022 and will include online and face-to-face opportunities to have your say.


NORTH FALLS
Offshore Wind Farm

 | **RWE** [FIND OUT MORE](#)

STAKEHOLDER ENGAGEMENT

Appendix D - Example stakeholder email (statutory stakeholders)

Dear NAME for those known or STAKEHOLDER

As an important stakeholder, I am writing to inform you of our public consultation and invite you to provide feedback on the current proposals for North Falls Offshore Wind Farm, which is being developed in the southern North Sea more than 20km off the UK coast.

As you no doubt are aware, North Falls is a proposed extension to the existing 504-megawatt Greater Gabbard Offshore Wind Farm, comprising an offshore array area of 150km² off the East Anglia coast and an onshore grid connection in Tendring, Essex.

Following an introductory consultation held in October 2021, a second consultation has been launched presenting updated proposals, particularly around the project's onshore infrastructure. Visit the online consultation portal - <https://non-stat.northfallsoffshore.com/> - or join us at one of our two webinars or five local face-to-face events.

Date (2022)	Time	Venue
Thursday 3 November	4pm to 8pm	McGrigor Hall 85 Fourth Ave Frinton-on-Sea CO13 9EB
Friday 4 November	4pm to 8pm	Great Bromley Village Hall Parsons Hill Great Bromley CO7 7JA
Saturday 5 November	11am to 3pm	Tendring Village Hall Tendring Clacton-on-Sea CO16 0BG
Friday 11 November	4pm to 8pm	Thorpe Le Soken Women's Institute Hall High Street Thorpe Le Soken CO16 0EF
Saturday 12 November	11am to 3pm	Ardleigh Village Hall Station Road Ardleigh CO7 7RS

The webinars will be at 6pm on Tuesday 15 November and Wednesday 23 November. To attend please register via our website.

We would be very grateful if you could take the time to review the proposals and give us your views. Feedback from this consultation will help us to finalise our Preliminary Environmental Information Report, due for completion in early 2023.

To respond to the consultation please provide feedback by **Friday 9 December**.

Regards
The North Falls Team

Appendix E - Stakeholders contacted at consultation launch

Statutory stakeholders

- Marine Management Organisation
- Marine Management Organisation (NeuConnect)
- The Crown Estate
- Natural England
- Maritime and Coastguard Agency
- Port of London Authority (PLA)
- Harwich Haven Authority (HHA)
- Port of Felixstowe
- Harwich International Port
- HM Coastguard
- Kent & Essex Inshore Fisheries and Conservation Authority (IFCA)
- Historic England
- JNCC
- Ministry of Defence - Offshore Safeguarding team
- Defence Infrastructure Organisation
- Trinity House
- Civil Aviation Authority
- Chamber of Shipping
- NATS Safeguarding
- RSPB
- RPSB
- Whale and Dolphin Conservation Society
- The Wildlife Trusts
- Essex Wildlife Trust
- The Woodland Trust
- National Trust
- Essex Coast Organisation
- Royal National Lifeboat Institution
- Royal Yachting Association
- Cruising Association
- Cefas
- ABP Ports
- UK Hydrographic Office
- Kingfisher
- Local fisheries
- National Federation of Fishermen's Organisations
- Environment Agency
- Network Rail Infrastructure Ltd
- Relevant Statutory Undertakers
- National Grid Electricity Transmission
- NeuConnect Britain Ltd
- BritNed Development Ltd
- Century Link
- National Grid
- National Grid Ventures
- Royal National Lifeboat Institute
- Police, Fire and Crime Commissioner for Essex
- Tendring District Council
- Frinton and Walton Parish Council
- Thorpe-le-Soken Parish Council
- Little Clacton Parish Council
- Essex County Council
- Highways England
- Public Health England
- Health and Safety Executive
- NHS England
- North East Essex Clinical Commissioning Group
- Coal Authority
- Canal and River Trust
- Forestry Commission (East and Midlands)
- North Essex Partnership NHS Foundation Trust
- East Suffolk and North Essex NHS Foundation Trust
- East Of England Ambulance Service NHS Trust
- Colchester Borough Council
- Babergh District Council
- Suffolk County Council
- East Suffolk Council
- Hertfordshire County Council
- Cambridgeshire County Council
- Southend-on-Sea Borough Council
- Thurrock Council
- London Borough of Enfield
- London Borough of Waltham Forest
- London Borough of Redbridge
- London Borough of Havering
- Royal Mail
- NATS
- Homes England
- Great Oakley Parish Council
- Great Bentley Parish Council
- Elmstead Parish Council
- Great Bromley Parish Council
- Ardleigh Parish Council
- Mistley Parish Council
- Lawford Parish Council
- Tendring Parish Council
- Beaumont-cum-Moze Parish Council
- Bradfield Parish Council
- Wix Parish Council
- Frating Parish Council
- Weeley Parish Council

- Little Bentley Parish Council
- Little Bromley Parish Council
- St. Osyth Parish Council
- Highways England Historical Railways Estate
- Affinity Water
- Anglian Water
- Cadent Gas Limited
- Last Mile Gas Ltd
- Energy Assets Pipelines Limited
- ES Pipelines Ltd
- ESP Networks Ltd
- ESP Connections Ltd
- Fulcrum Pipelines Limited
- Harlaxton Gas Networks Limited
- GTC Pipelines Limited
- Independent Pipelines Limited
- Indigo Pipelines Limited
- Leep Gas Networks Limited
- Murphy Gas Networks limited
- Quadrant Pipelines Limited
- National Grid Gas Plc
- Scotland Gas Networks Plc
- Southern Gas Networks Plc
- Greater Gabbard Offshore Wind Limited
- Galloper Wind Farm Limited
- Five Estuaries Offshore Windfarm Limited
- Eclipse Power Network Limited
- Last Mile Electricity Ltd
- Energy Assets Networks Limited
- ESP Electricity Limited
- Forbury Assets Limited
- Fulcrum Electricity Assets Limited
- Harlaxton Energy Networks Limited
- Independent Power Networks Limited
- Indigo Power Limited
- Leep Electricity Networks Limited
- Murphy Power Distribution Limited
- The Electricity Network Company Limited
- UK Power Distribution Limited
- Utility Assets Limited
- Vattenfall Networks Limited
- Eastern Power Networks Plc
- UK Power Networks Limited
- Diamond Transmission Partners
- Galloper Limited
- Greater Gabbard OFTO Plc
- National Grid Electricity Transmission Plc
- TC Gunfleet Sands OFTO Ltd
- Medway Council
- Maldon District Council
- Rochford District Council

Local councillors (Essex/Tendring)

- Cllr Mark Stephenson
- Cllr Mark Skeels
- Cllr Paul Honeywood
- Cllr Alan Goggin
- Cllr Lesley Wagland
- Cllr Mark Platt
- Cllr Ivan Henderson
- Cllr Dan Land
- Cllr Carlo Guglielmi
- Cllr Neil Stock OBE
- Cllr Jeff Bray
- Cllr Lynda McWilliams
- Cllr Mary Newton
- Cllr Alex Porter
- Cllr Michael Talbot
- Cllr Neil Stock OBE
- Cllr Jeff Bray
- Cllr Dan Land
- Cllr Peter Harris
- Cllr Nick Turner
- Cllr Terry Allen
- Cllr Kanagasundaram King
- Cllr Colin Winfield
- Cllr Michael Bush
- Cllr Delyth Miles
- Cllr Lynda McWilliams
- Cllr Gary Scott
- Cllr Ann Wiggins
- Cllr Alan Coley
- Cllr Carlo Guglielmi
- Cllr Valerie Guglielmi
- Cllr Zoe Fairley
- Cllr Dan Casey
- Cllr Jayne Nash
- Cllr James Codling
- Cllr Mary Newton
- Cllr Peter Cawthron
- Cllr Alex Porter
- Cllr John Chittock
- Cllr Gina Placey
- Cllr Maurice Alexander
- Cllr Chris Griffiths
- Cllr Gemma Stephenson
- Cllr Susan Honeywood
- Cllr Andy Baker
- Cllr Paul Clifton
- Cllr Fiona Knowles
- Cllr Anne Davis
- Matthew Thomas Growth and Development Manager

- Mark Woodger Principal Planning Officer (Major Development and New Communities)
- Nicholas French Project Manager
- Gavin Jones Chief Executive Officer
- Philip Dash Principal Planner - Minerals and Waste Planning
- Mike Carran Regeneration in remit, Tom Gardiner position as
- Regeneration Manager has not been filled
- Lee Healey Regeneration in remit, Tom Gardiner position as Regeneration Manager has not been filled
- Gary Guiver Director of Planning

Local Chairs (Essex/Tendring)

- Alresford Parish Council Frank Belgrove
- Ardleigh Parish Council Mr Tim M Barrott
- Beaumont Parish Council Tom Greenwood
- Bradfield Parish Council Ms Kreon Wynn
- Elmstead Parish Council Amanda Brennan
- Frating Parish Council Terry Cuthbert
- Frinton and Walton Town Council E.T Allen
- Great Bentley Parish Council Mrs Pippa Dennitts
- Great Bromley Parish Council Fred Nicholls
- Great Oakley Parish Council Yvonne Bailey
- Lawford Parish Council Valerie Guglielmi
- Little Bentley Parish Council Philip Mariano Suarez
- Little Bromley Parish Council Jonathan Buxton
- Little Clacton Parish Council John Cutting
- Little Oakley Parish Council Mr David Attrill
- Manningtree Town Council Cllr. Michelle Taylor
- Mistley Parish Council Ms Charlotte Howell
- Ramsey and Parkeston Parish Council Bill Davidson
- St Osyth Parish Council Mrs Sonia Grantham
- Tendring Parish Council Mr Ted Edwards
- Thorpe-le-Soken Parish Council Daniel Land
- Thorrington Parish Council Pam Sadler
- Weeley Parish Council Mrs Christine Hamilton
- Wix Parish Council Guy Nelson
- Wrabness Parish Council Richard Colley

Local Clerks (Essex/Tendring)

- Alresford Parish Council Matt Cook
- Ardleigh Parish Council Rachel Fletcher
- Beaumont Parish Council Isobel Davidson
- Bradfield Parish Council Line Djuve-Wood
- Elmstead Parish Council Angela Baxter
- Frating Parish Council Jennifer Spear
- Frinton and Walton Town Council Jerry Wedge
- Great Bentley Parish Council Grahame Walkingshaw
- Great Bromley Parish Council Mrs Lizzie Ridout
- Great Oakley Parish Council Daniel Land
- Lawford Parish Council Bridget Tighe
- Little Bentley Parish Council Emma Cansdale
- Little Bromley Parish Council Dawn Sauka
- Little Clacton Parish Council Daniel Land
- Little Oakley Parish Council Emma Haward
- Manningtree Town Council Jennifer Spear
- Mistley Parish Council Susan Clements
- Ramsey and Parkeston Parish Council Lin Keating

- St Osyth Parish Council Mr Neil Williams
- Tendring Parish Council Rachel Edwards
- Thorpe-le-Soken Parish Council Mrs Jessica Ball

- Thorrington Parish Council Ms Elizabeth Crook
- Weeley Parish Council Kevin Harkin
- Wix Parish Council Mrs Emma Cansdale
- Wrabness Parish Council Mrs Carol Greenwood

Local councillors (Suffolk/Kent)

- Cllr Matthew Hicks
- Cllr Richard Rout
- Cllr Bobby Bennett
- Cllr Rachel Hood
- Cllr Rebecca Hopfensperger
- Cllr James Reeder
- Cllr Andrew Reid
- Cllr Richard Smith MVO
- Cllr Paul West
- Cllr Graham Newman
- Cllr Steve Wiles
- Cllr Andrew Reid
- Cllr T-J Haworth-Culf
- Cllr Richard Smith
- Cllr Michael Ladd
- Cllr Craig Rivett
- Cllr Melania Vigo di Gallidoro
- Cllr Jamie Starling
- Cllr Jenny Ceresa
- Cllr James Reeder
- Cllr Ryan Harvey

- Cllr Roger Gough
- Cllr Peter Oakford
- Cllr Claire Bell
- Cllr David Brazier
- Cllr Susan Carey
- Cllr Sue Chandler
- Cllr Michael Hill
- Cllr Derek Murphy
- Cllr Shellina Prendergast
- Cllr Bryan Sweetland
- Cllr Lesley Game
- Cllr Rosalind Binks
- Cllr Trevor Shonk
- Cllr Karen Constantine
- Cllr Derek Murphy
- Cllr Trevor Bond
- Cllr Steve Manion
- Cllr Oliver Richardson
- Cllr Nigel Collor
- Cllr David Beaney
- Cllr Jackie Meade

Local Chairs/Clerks (Suffolk/Kent)

- Corton Steve Pavey
- Gisleham
- Kessingland Alan Green
- Benacre Mr W Mitchell
- Reydon Julie Jordan
- Walberswick Mark Knight
- Dunwich Rod Smith
- Aldringham Shirley Tilbrook
- Sudbourne Joanne Peters

- Orford Marie Backhouse
- Hollesley Judi Hallett
- Bawdsey Tona Hughes
- Lowescroft (Town) Shona Bendix
- Covehithe
- Southwold (Town)
- Leiston (Town) Caroline Rinder
- Aldeburgh (Town) Ruth Procter
- Felixstowe (Town)

East Suffolk Councillors

- Cllr Steve Gallant
- Cllr Craig Rivett
- Cllr Letitia Smith
- Cllr Mary Rudd
- Cllr Stephen Burroughes
- Cllr Richard Kerry
- Cllr David Ritchie
- Cllr Maurice Cook
- Cllr James Mallinder
- Cllr Norman Brooks
- Cllr Steve Gallant
- Cllr Mark Jepson
- Cllr Steve Wiles
- Cllr Stuart Bird

- Cllr Mike Deacon
- Cllr Tracy Green
- Cllr James Mallinder
- Cllr Ray Herring
- Cllr Tony Cooper
- Cllr Tom Daly
- Cllr Russ Rainger
- Cllr Norman Brooks
- Cllr David Beavan
- Cllr Letitia Smith
- Cllr Jenny Ceresa
- Cllr Craig Rivett
- Cllr Peter Byatt
- Cllr Louise Gooch

- Cllr Malcolm Pitchers
- Cllr Janet Craig
- Cllr Tess Gandy
- Cllr Keith Patience
- Cllr Linda Coulam
- Cllr Mary Rudd
- Cllr Paul Ashdown

MPs

- Mr Peter Aldous
- Rt Hon Sir John Hayes CBE MP
- Mr James Wild MP
- Mr Duncan Baker
- Sir Bernard Jenkin MP
- Mr Brandon Lewis CBE MP
- Mr Richard Bacon MP
- Dr Dan Poulter MP
- Dr Therese Coffey MP
- Mr Giles Watling MP
- Rt Hon John Wittingdale MP
- Mr James Duddridge MP
- Mr James Cartlidge MP
- Ms Priti Patel MP

For those who have registered interest

- LEPs
- Hard to reach groups
- Industry and Business Groups
- Tourist organisations
- Offshore related
- Ports
- Request for info
- Ongoing requests

Appendix F - Email inviting councillors to a breakfast event

Dear [name]

Following the launch of the North Falls public consultation yesterday, we would like to invite you to a councillor breakfast on Saturday 5th November. This event will give you the chance to discuss proposals with both your colleagues and the North Falls Team.

It will be taking place between 9:00am to 10:30am at Tendring Village Hall.

Please let us know whether you will be able to attend by replying to this email.

Kind regards
[name]

DRAFT Councillor Letter

Dear [insert name of recipient here]

We would like to invite you to a breakfast briefing to show you the latest plans for the proposed North Falls offshore wind farm and give you an opportunity to provide your feedback.

As you may be aware, North Falls is a proposed extension to the existing 504-megawatt Greater Gabbard Offshore Wind Farm, comprising an offshore array area of 150km² off the East Anglia coast and an onshore grid connection in Tendring, Essex.

Following an introductory consultation held in October 2021, this second consultation presents updated proposals on the project, particularly on the subject of onshore infrastructure.

It will give local people a number of opportunities to have their say through an online consultation portal, two webinars, and the chance to meet the team in person at five local events in early November.

We are hoping you can join us at Tendring Village Hall, between 9:00am and 10:30am, on Saturday 5 November for a preview of our exhibition. This session will allow you and your colleagues to discuss the proposals with our team before the event opens to the public later that day.

A range of pastries, hot food and drinks from Alison Baker Desserts and Cakes in Tendring will be available for you to enjoy.

Please confirm your attendance by calling the North Falls Team on 01242 577277.

We look forward to seeing you there.

Kind Regards

The North Falls Team

Appendix G - Email thanking people for participation in the consultation

Good afternoon

I am writing to thank you for your input into the North Falls pre-application consultation which closed on Friday.

We had around 250 attend one or more of our five face-to-face consultation events and two webinars, and more than 1400 visits to the consultation portal. We have received feedback from a total of 57 individuals, organisations and statutory bodies (including Councils).

We will take the coming period (before and after Christmas) to review all the responses and inputs, and will publish a consultation summary and report in the New Year.

We will also be holding a further consultation in 2023 – on our full Preliminary Environmental Information Report - so will ensure you receive details about that when we are at that stage.

Kind regards

Sue

Appendix H - Example letter to landowners (with agent)

Dear Mr/Mrs/Sir/Madam/Dr,

North Falls Offshore Wind Farm (NFOW)

Upcoming public consultation events

NFOW is an extension to the existing Greater Gabbard Offshore Wind Farm which is proposed to connect into the National Grid in Tendring, Essex. The project is currently in the pre-application stage of applying for a Development Consent Order (DCO).

As part of the application process and following an initial introductory consultation held in October 2021, NFOW will be presenting their updated proposals for feedback during a consultation that will run from Monday 17th October until Friday 9th December 2022.

This consultation phase will include five in-person local events. The enclosed invitation sets out the dates and locations of those as well as how you can respond to the project with your feedback.

As you are a person identified as being an owner and/or occupier of land within the consultation boundary, we anticipate you will have specific questions or clarifications which you would like to discuss with the projects. We therefore wanted to confirm that Dalcour Maclaren will be in attendance at each of the in-person events should you wish to discuss these matters. If you are unable to attend any of the dates but wish to meet with Dalcour Maclaren, please let us know and we can arrange a meeting.

The NFOW consultation will be similar to the recently concluded Five Estuaries Offshore Wind Farm (FEOW) consultation. Whilst NFOW is continuing to work with FEOW on route selection and surveys, the projects have different owners and are progressing two separate DCO applications on separate timelines, each requiring their own stakeholder engagement. This is why there are separate project-specific consultations and for that reason, whilst you may have provided feedback to FEOW during their consultation you will also need to respond specifically to NFOW.

We hope that you will participate in the upcoming consultation and look forward to hearing from you in due course.

Yours faithfully/sincerely

Dalcour Maclaren

MEDIA ENGAGEMENT AND COVERAGE

Appendix I - Press releases, media coverage and media list

Press release on opening of consultation

MEDIA RELEASE



11 October 2021

NORTH FALLS KICKS OFF EARLY CONSULTATION ON WIND FARM PLANS

- *North Essex communities are being invited to find out more about the renewable energy project and provide their feedback online at www.northfallsoffshore.com*
- *Consultation on early plans launches on Monday 25 October and runs until Friday 12 November 2021*

People across North Essex are being invited to have their say on early proposals for North Falls – a new offshore wind farm that’s being developed by RWE and SSE more than 20km off the East Anglia coast.

This early consultation on the plans will be conducted online, with information about the project being published on the project website from Monday 25 October. Feedback is then being invited, either through the website or via freepost, by Friday 12 November.

Plans for the offshore wind farm remain at an early stage but the project will generate much needed green electricity for the UK, as well as unlocking a range of socio-economic benefits - such as skilled new jobs and supply chain opportunities for local businesses.

While the offshore location of the wind farm has already been agreed, the location of the onshore infrastructure is yet to be determined, because a grid connection location for the project has not yet been provided by National Grid.

However, it is likely this connection will be located in North Essex and this initial consultation is therefore designed to introduce the general principles of the project to local people and gather their initial feedback. There will be further opportunities for local people to offer their views on the plans in more detail as part of future consultations.

Daniel Harper, Consents Manager at North Falls, says: “North Falls is an incredibly important project and we’re pleased to be able to share our very earliest plans with local communities. We’re still some way from being able to share significant amounts of detail but engagement with local people is important to us, so we want to take this opportunity to introduce the project, share the information we do have and start to collect early feedback.

“Our target of reaching Net Zero carbon emissions by 2050 and the need to decarbonise our energy generation network is being brought into sharp focus by the UN Climate Change Conference, COP26, which starts in Glasgow next week. Recent issues around energy security have also highlighted the need to develop further home-grown sources of energy generation here in the UK.

NorthFallsOffshore.com



“But the focus of this initial consultation is to introduce the North Falls project to local communities in North Essex, share the information we have available at this early stage and give people a first opportunity to start giving us their views.”

The consultation is open from Monday 25 October to Friday 12 November 2021. To find out more and register feedback, please visit www.northfallsoffshore.com. Feedback can also be sent by mail to **FREEPOST North Falls**. This is a freepost service, so no stamp is required.

– ENDS –

For information: North Falls Communications Manager, Sue Vincent on email: sue.vincent@rwe.com or mobile: +44 7768508742

North Falls Offshore Wind Farm

North Falls Offshore Wind Farm is being developed by a joint venture company owned equally by SSE Renewables and RWE Renewables. The joint venture company comprises team members from both owner organisations. The project site is more than 20 kilometres off the UK’s coast in the southern North Sea and covers a total area of 150 km².

RWE Renewables

RWE Renewables, the newest subsidiary of the RWE Group, is one of the world’s leading renewable energy companies. With around 3,500 employees, the company has onshore and offshore wind farms, photovoltaic plants and battery storage facilities with a combined capacity of approximately 9 gigawatts. RWE Renewables is driving the expansion of renewable energy in more than 15 countries on four continents. By the end of 2022, RWE Renewables targets to invest €5 billion net in renewable energy and to grow its renewables portfolio to 13 gigawatts of net capacity. Beyond this, the company plans to further grow in wind and solar power. The focus is on the Americas, the core markets in Europe and the Asia-Pacific region.

About SSE Renewables

SSE Renewables is a leading developer, owner and operator of renewable energy across the UK and Ireland, with a portfolio of around 4GW of onshore wind, offshore wind and hydro. Part of the FTSE-listed SSE plc, its strategy is to drive the transition to a net zero future through the world class development, construction and operation of renewable energy assets. SSE Renewables owns nearly 2GW of operational onshore wind capacity with over 1GW under development. Its 1,459MW hydro portfolio includes 300MW of pumped storage and 750MW of flexible hydro.

Its operational offshore wind portfolio consists of 487MW across two offshore joint venture sites, Beatrice and Greater Gabbard, both of which it operates on behalf of its asset partners. SSE

Renewables has the largest offshore wind development pipeline in the UK and Ireland at over 6GW and has an onshore wind pipeline across both markets in excess of 1GW.

Example of media coverage



By **Dani Adewale**
Reporter

Share 0 Comments

MORE than 250 people attended consultation events over the proposed extension to a wind farm in the North Sea.

The North Falls project is a proposed extension to the existing 504-megawatt Greater Gabbard Offshore Wind Farm, comprising an offshore array area of 150km off the Essex coast and an onshore grid connection in Tendring.

It is being developed by a joint venture company owned equally by SSE Renewables and RWE Renewables.

A spokeswoman for the project said: “Five face-to-face events were held in Tendring along with two webinars, which were designed to give the local community the chance to find out more about the project and talk to members of the project team.

“The events in Frinton, Great Bromley, Tendring, Thorpe-le-Soken and Ardleigh, and the two webinars, were held this month.

“The online consultation portal remains live and the project team urge anyone who would like to feed their comments into the project to do so via the portal before the consultation closes.”

The second consultation phase ends on Friday, December 9.

For more information about the scheme and the consultation, as well as to provide your own comments, visit bit.ly/3Uh7YUu.

Share 0 Comments

Media list

Local Media

- The Essex Enquirer
- The Beach
- Essex Life
- Planet Radio / Greatest Hits
- Heart East Anglia / Essex
- Coastal Scene
- Clacton and Frinton Gazette
- Harwich Standard
- Anglia Press Agency
- Ipswich24
- Daily Gazette
- BBC Radio Essex
- BBC Radio Suffolk
- East Anglia News Service
- BBC East
- BBC Norfolk
- North Norfolk News
- Anglia Business
- Business in East Anglia
- Haverhill Echo
- Suffolk Free Press
- Daily Gazette
- BBC Radio Essex
- BBC East
- ITV Anglia
- ITV News
- Businesseast Monthly
- East Anglia in Business
- East Anglian Daily Times (Essex)
- Lowestoft Journal
- Offshore Update
- East Anglian Daily Times (East Suffolk)
- East Anglian Daily Times (Essex)
- ITV Anglia
- East Anglian Daily Times and Ipswich Star
- Insight Energy (Norfolk and Suffolk Unlimited)
- Essex Wire (Business News)
- Renewable UK
- EEEGR

Council publications

- Kent CC Inside Track newsletter
- Kent CC residents' e-newsletter
- East Suffolk CC residents magazine
- Essex CC youth services newsletter
- Essex Climate Commission newsletter
- Colchester Borough Council Centurion Magazine
- Tendring District Council The Tendring Magazine
- Thorpe Le Soken Parish Council Village Magazine
- Great Bromley Parish Council Village Magazine
- Great Bentley Parish Council Parish Magazine
- Great Holland Parish Council Village Voice Magazine
- Frinton on Sea Parish Council Vision Magazine
- St Andrews Weeley Parish Council Parish Magazine
- Holland Residents Association Community Magazine
- Brightlingsea Town Council Newsletter
- Alresford Parish Council Newsletter

Trade media

- 4C Offshore
- A Word About Wind
- Acuris (Sparksread)
- AltEnergyMag.com
- Argus Media
- Better Society Network
- Bloomberg
- Bloomberg NEF
- BusinessGreen
- Carbon Brief
- Centaur Media
- Clean Energy Pipeline
- Clean Technology Business Review
- Cleantech Magazine
- Climate Home News
- edie.net

- Energy Acuity
- Energy Central
- Energy Live News
- Future Net Zero
- Energy Live News
- Energy Rev
- Energy Voice
- Energy Wire
- Energy World
- Environment and Energy Management News
- Environmental Finance
- FORESIGHT Climate & Energy
- Freelance
- Funds Europe
- Greenbiz.com
- Greenwire
- Green Tech Media
- ICIS
- ICIS Energy
- IJGlobal
- Industry Projects & Technology
- Infra News and Information Group
- Infrastructure Investor
- inspiratia
- Institutional Asset manager
- Institutional Investor
- Investment Week
- IPE
- Low Carbon Energy Investor
- Merger Market
- New Scientist
- North American WindPower
- Offshore Energy Today
- Offshore Engineer
- Offshore Wind Biz
- Offshore Wind Engineering
- Offshore Wind Journal
- OGV Energy
- Private Equity International
- Private Equity Wire
- Project Finance International
- Reuters
- Project Finance International
- Recharge
- Renewable Energy
- Renewable Energy Focus
- Renewable Energy Technology
- Renewable Energy World Magazine
- Renewable UK
- Renewables Investor
- ReNews
- Scottish Energy News
- Sparksread
- SteelGuru
- Sun & Wind Energy
- Utility Week
- Wind Energy Network
- Wind Energy Update
- Wind Tech International
- Windpower Monthly

Appendix J - Advertisement in the Clacton and Frinton Gazette

www.clactonandfrintongazette.co.uk NEWS 5

INVITATION TO HAVE YOUR SAY ON OUR PROPOSALS FOR NORTH FALLS OFFSHORE WIND FARM

We'd like to invite you to give your views on our proposals for North Falls - an offshore wind farm being developed over 10km south of the East Angles coast. Consultations will run from Monday 17 October until Friday 9 December 2022 and will include online and face-to-face opportunities to have your say.

Please visit www.northfalls-offshore.com to find out more about our proposals and provide us with your comments or attend one of the in-person events or webinars.

Date	Time	Topic
Thursday 17 November 2022	Open to Ryan	Multipler Hall, 85 North Ave, Frinton-on-Sea, CO13 9ER
Friday 6 November 2022	Open to Ryan	Canon Rectory Village Hall, Parsons Hill, Canon Rectory, Clacton-on-Sea, CO17 7JA
Thursday 9 November 2022	12pm to 7pm	Clacton Village Hall, Trenching, Clacton-on-Sea, CO14 0AQ
Friday 10 November 2022	Open to Ryan	Stanger Lauden Mowen's Yardgate Hall, High Street, Thorne Lauden, CO18 0SD
Monday 14 November 2022	12pm to 3pm	Ardsley Village Hall, Seaton Road, Ardsley, Essex, CO17 7BA

We will also be holding two webinars starting at 9pm on Tuesday 18 November and Wednesday 23 November. To register to attend, please visit our website.

OTHER WAYS TO GET IN TOUCH:
 Telephone: 0800 314 1140
 Email: consult@northfalls-offshore.com
 Free: 0800 314 1140 North Falls

THE DEADLINE FOR COMMENT IS FRIDAY 9 DECEMBER 2022

NORTH FALLS
 OFFSHORE WIND FARM
 | RWE

EVENTS

Appendix K - Photos from events



Tendring Village Hall



McGrigor Hall



Great Bromley Village Hall



Ardleigh Village Hall



Thorpe Le Soken WI

Appendix L - Webinar recordings

Thursday 15 November 2022 and Wednesday 23 November 2022 at 6pm-7pm

Programme of completed consultation events:

<i>Date</i>	<i>Time</i>	<i>Location</i>
Thursday 3 November 2022	4pm to 8pm	McGrigor Hall, 85 Fourth Ave, Printon-on-Sea, CO13 9EB
Friday 4 November 2022	4pm to 8pm	Great Bromley Village Hall, Parsons Hill, Great Bromley, Colchester, CO7 7JA
Saturday 5 November 2022	11am to 3pm	Tendring Village Hall, Tendring, Clacton-on-Sea, CO16 0BG
Friday 11 November 2022	4pm to 8pm	Thorpe Le Soken Women's Institute Hall, High Street, Thorpe Le Soken, CO16 0EF
Saturday 12 November 2022	11am to 3pm	Ardleigh Village Hall, Station Road, Ardleigh, Essex, CO7 7RS
Tuesday 15 November 2022	6pm to 7pm	Recording of online consultation event
Wednesday 23 November 2022	6pm to 7pm	Recording of online consultation event

Appendix M - Exhibition panels

WELCOME TO OUR CONSULTATION

NORTH FALLS
Offshore Wind Farm

North Falls Offshore Wind Farm, an extension project to the existing 80-1 MW Greats Cabhead Offshore Wind Farm, is being developed in the southern North Sea more than 20km off the coast. Its site is in two parts which together cover a total area of 100kms.

North Falls is being developed by North Falls Offshore Wind Farm Limited, a 50/50 joint venture company owned by SSE Renewables and RWE. This is the second public consultation about the project. It is open from Monday 17 October until Friday 9 December 2016.

The initial October 2016 consultation to introduce North Falls and further consultation on how we intend to progress the project was well received. However, this is a further consultation featuring both online and face to face opportunities to find out how the project proposals have progressed over the past 12 months and provide your feedback.

There will be another consultation and further opportunities to engage with us in 2017 prior to submission of our application. However, through this consultation we hope to give stakeholders the opportunity to provide their opinion and thoughts on the project as they stand.

Our aim is to have in place any consents you might have about our proposals and close out the feedback loop as soon as possible to have you say. You can also contact us directly via the website, Facebook, email or phone.

Telephone: 01200 324 2145
Email: northfalls@northfalls.co.uk
www.northfalls.co.uk

Dates and times of consultation events:

Date	Time	Where
Thursday 1 November 2016	9pm to 8pm	Manchester (M6), St. Peter's Ave, Victoria-Str-Gas, G04 9JH
Friday 2 November 2016	9pm to 8pm	Great Bentley Village Hall, Farnham Hill, Great Bentley, Colchester, CO1 7JA
Saturday 3 November 2016	10am to 3pm	Thatching Village Hall, Thatching, Claxton-on-Ga, CO16 0RQ
Friday 11 November 2016	9pm to 8pm	Thorp Le Soken Women's Institute Hall, High Street, Thorp Le Soken, CO16 0JG
Saturday 12 November 2016	10am to 3pm	Ardfagh Village Hall, Breine Road, Ardfagh, Essex, CO16 0JG
Thursday 17 November 2016	9pm to 7pm	Online*
Wednesday 23 November 2016	9pm to 7pm	Online*

*To register to attend an online session, please visit our website

www.NorthFallsOffshore.com | SSE Renewables | RWE

RATIONALE FOR THE PROJECT

NORTH FALLS
Offshore Wind Farm

OFFSHORE WIND IN THE UK

In the past 10 months capacity of the UK's offshore wind sites has increased from one gigawatt (GW) to three and about 10 GW by 2020. The 2016-2020 period is expected to see a further 10 GW of capacity added to the UK's offshore wind fleet. This is a significant increase in capacity and will help to meet the UK's target of 100 GW of offshore wind capacity by 2030.

The UK Government's new approach to offshore wind is to provide a clear path for the industry. The new approach is based on a 'fast-track' process for consenting offshore wind projects. This will allow the industry to develop projects more quickly and efficiently. The new approach will also provide a clear path for the industry to develop projects more quickly and efficiently.

While the government's new approach to offshore wind is to provide a clear path for the industry, the industry must also ensure that it meets the UK's target of 100 GW of offshore wind capacity by 2030. This will require the industry to develop projects more quickly and efficiently.

Having a well-developed offshore wind industry will help to meet the UK's target of 100 GW of offshore wind capacity by 2030. This will require the industry to develop projects more quickly and efficiently.

OFFSHORE TRANSMISSION NETWORK REVIEW

A grid connection is a key requirement for each offshore wind farm, as it needs to be able to deliver the power it generates to the national transmission network.

In 2016, the Committee on Climate Change asked the government to develop a strategic transmission and offshore network for wind farms. This consultation is the offshore network and how this informs the design and delivery of transmission infrastructure.

The review, called the Offshore Transmission Network Review (OTNR), aims to bring together the key stakeholders involved in the design, siting, design and delivery of offshore wind to consider the existing network and how this informs the design and delivery of transmission infrastructure.

It will also be to ensure that the transmission infrastructure for offshore wind generation can deliver the most significant energy, avoiding the financial penalties for offshore wind to be avoided in achieving the target. This will be done with a view to finding the appropriate balance between environmental, social and economic costs.

HOW SITES ARE SELECTED

Site selection preferences

Together with the consultation we have decided to identify sites to be considered for development as part of our strategic transmission and offshore network. We have used a number of criteria to help us identify sites that are suitable for development. These include the size of the site, the quality of the wind resource, the proximity to the national transmission network, and the potential for the site to be developed in a way that is consistent with the UK's target of 100 GW of offshore wind capacity by 2030.

Consultation feedback continues to be a critical element of the site selection process and by this we mean consultation and public engagement as well as consultation with other projects. We have also followed a set of rules to help us identify sites that are suitable for development. These include the size of the site, the quality of the wind resource, the proximity to the national transmission network, and the potential for the site to be developed in a way that is consistent with the UK's target of 100 GW of offshore wind capacity by 2030.

Further information on these can be found in the consultation handbook.

www.NorthFallsOffshore.com | SSE Renewables | RWE

THE STORY SO FAR

NORTH FALLS
Offshore Wind Farm

Together SSE Renewables and RWE have been active in the East Angles region since the early 1990s. Our first project, the Greats Cabhead Offshore Wind Farm, located 21 km off the coast of Suffolk in the North Sea.

This site produced 100 MW of power and was the first offshore wind farm in the UK. It was the first of a new generation of offshore wind farms and was a major milestone in the development of the offshore wind industry in the UK.

BACKGROUND

Together SSE Renewables and RWE have been active in the East Angles region since the early 1990s. Our first project, the Greats Cabhead Offshore Wind Farm, located 21 km off the coast of Suffolk in the North Sea.

This site produced 100 MW of power and was the first offshore wind farm in the UK. It was the first of a new generation of offshore wind farms and was a major milestone in the development of the offshore wind industry in the UK.

EXTENSIONS TIMELINE

In February 2017, The Crown Estate, manager of the seabed, launched a process for wind farm operators to apply for extensions to their existing projects. This opportunity closed in May 2016, with eight project applications received.

After a local planning consultation (PLC), we will continue to assess the possible impact of the proposed wind farm extensions on relevant nature conservation sites of European importance.

Before independent advice was sought and there was consultation with the statutory nature planning authorities, the statutory nature conservation bodies and a number of non-governmental organisations.

In August 2016, The Crown Estate announced the extension of the Greats Cabhead Offshore Wind Farm, including a small extension to the south of the existing site. This extension will be developed in two phases. The first phase will be developed in 2017 and the second phase in 2018.

The extension to the Greats Cabhead Offshore Wind Farm and the Crown Estate was agreed in August 2016 and the project is now in development with the aim of submitting its application in 2017 and achieving a development consent order (DCO) in 2018.

Timeline

Date	Event
November 2016	The Crown Estate concludes its Offshore Extension Assessment process resulting in a list of sites eligible for extension.
November 2016	Final agreement signed between the two owners, SSE Renewables and RWE, to extend the Greats Cabhead Offshore Wind Farm.
December 2016	Final agreement signed between the two owners, SSE Renewables and RWE, to extend the Greats Cabhead Offshore Wind Farm.
2016 to 2017	Statutory and offshore extension and nature, marine planning and design, including the consultation and a number of non-governmental organisations, including with the Environmental Assessment and Project Risk Offshore Extension Assessment process.
Spring 2017	Environmental Impact Assessment completed.
2017	Finalised Offshore Extension Assessment completed.
2017/18	Finalised Offshore Extension Assessment completed.
2018	Finalised Offshore Extension Assessment completed.
2018	Finalised Offshore Extension Assessment completed.
2018	Finalised Offshore Extension Assessment completed.

www.NorthFallsOffshore.com | SSE Renewables | RWE

DEVELOPING NORTH FALLS

NORTH FALLS
Offshore Wind Farm

NATIONALLY SIGNIFICANT INFRASTRUCTURE PROJECT

As a nationally significant infrastructure project (NSIP), North Falls must be consented under the Planning Act 2008 and the Infrastructure Act 2015. This means that the project will be subject to a number of regulatory requirements, including the need to obtain a Development Consent Order (DCO) from the Secretary of State for Energy and Climate Change.

The NSIP process involves a number of stages, including the submission of a Planning Application, the submission of a DCO application, and the submission of a final DCO application. The project will also be subject to a number of regulatory requirements, including the need to obtain a Development Consent Order (DCO) from the Secretary of State for Energy and Climate Change.

The NSIP process involves a number of stages, including the submission of a Planning Application, the submission of a DCO application, and the submission of a final DCO application. The project will also be subject to a number of regulatory requirements, including the need to obtain a Development Consent Order (DCO) from the Secretary of State for Energy and Climate Change.

PRE-APPLICATION PHASE

North Falls is now in the pre-application phase, which will be followed by the Development Consent Order (DCO) application to the Secretary of State for Energy and Climate Change. This is the key part of the process to secure the project's consent to be developed.

The pre-application phase involves a number of stages, including the submission of a Planning Application, the submission of a DCO application, and the submission of a final DCO application. The project will also be subject to a number of regulatory requirements, including the need to obtain a Development Consent Order (DCO) from the Secretary of State for Energy and Climate Change.

The pre-application phase involves a number of stages, including the submission of a Planning Application, the submission of a DCO application, and the submission of a final DCO application. The project will also be subject to a number of regulatory requirements, including the need to obtain a Development Consent Order (DCO) from the Secretary of State for Energy and Climate Change.



www.NorthFallsOffshore.com | SSE Renewables | RWE

DEVELOPING NORTH FALLS

NORTH FALLS
Offshore Wind Farm

Environmental Statement (ES)
The Environmental Statement (ES) will be the final output of the ES consultation by the North Falls project team, and it will be an extension of the ES.

It will incorporate the results of the ES and the comments, including details and also the reasons of responses from our consultation.

The ES will also describe any changes made to the project proposals since the ES and the mitigation measures that will be implemented and will form a key part of the submitted ES application. The document will accompany the final application when it is submitted to the Planning Inspectorate.

Consultation
Consultation is a key element of the pre-application development process and is a key part of the ES. The project team will ensure that stakeholders are engaged in the development and have the opportunity to comment on the proposals at key decision-making points.

The preparation and refinement of the North Falls proposals continues to be an iterative process. Feedback received, considered and changes made in a step-by-step approach. Issues with comments or suggestions about the project are possible from throughout the development phase.

Review, pre-application consultation points, and in the course of consultation, will provide the best opportunity for stakeholders to comment on the proposals, submit comments, submit feedback and, importantly, have an influence on the project as it develops.

At each defined consultation period, North Falls will ask for input related to specific elements of the proposals where stakeholders - particularly those with local knowledge - will be able to offer valuable insights. These insights will be carefully considered by the project team and incorporated as feasible.

WHO WILL WE CONSULT?

NORTH FALLS
Offshore Wind Farm

Throughout development, North Falls continues to consult with stakeholders to gather feedback on the way the project is being assessed and on the project itself as it takes shape. The groups of stakeholders, or consultees, are defined as follows:

1. Those directly affected. This includes statutory bodies, the relevant local authorities, landowners and others with an interest in the land or who may be affected by the construction and operation of a consented scheme. These groups are sometimes referred to as Section 42 consultees.
2. The local community. Defined as those people living or working within a specified distance of the offshore infrastructure or those who may have an interest in the area, for example, local voluntary groups and charities and the fishing community or other non-statutory groups. These are sometimes referred to as Section 47 consultees.
3. The general public. These are people beyond the local community who will primarily be reached through national newspaper advertisements and on the project website. These are sometimes referred to as Section 48 consultees.

APPLICATION PROCESS - THE SIX STEPS

1. Pre-application
2. Application
3. Consultation
4. Decision
5. Appeal
6. Construction

1. **Pre-application**
Consult with stakeholders in the local area and with the planning team to discuss the location of the project and the likely impacts. This will include a pre-application meeting with the local planning authority and a pre-application meeting with the local planning authority.

2. **Application**
The pre-application meeting will result in a list of issues to be addressed in the application. The application will include a detailed description of the project and the likely impacts, and a list of mitigation measures to be implemented.

3. **Consultation**
The planning Inspectorate will publish the application on the public register. This will allow anyone to comment on the application. The project team will respond to all comments received.

4. **Decision**
The planning Inspectorate will make a decision on the application. This will be based on the information provided in the application and the comments received.

5. **Appeal**
If the project team is not satisfied with the decision, they can appeal to the Secretary of State for the Environment, Food and Rural Affairs.

6. **Construction**
Once the application has been approved, the project team can start construction of the project.

www.NorthFallsOffshore.com

OTHER NEARBY INFRASTRUCTURE

North Falls Offshore Wind Farm is a nationally significant infrastructure project (NSIP) and, as such, is required to consider its cumulative impact and its combination effects in relation to other relevant infrastructure projects that are planned in the same geographic region, including the proposed East Angles Offshore Wind Farm.

There are a number of other NSIP and infrastructure development proposals locally and the North Falls project team is already engaging and coordinating with project promoters. This engagement will continue as North Falls progresses. Part of this engagement will include monitoring and reporting opportunities for cooperation with the developers of the projects as far as is practicable, as part of the development process.

www.NorthFallsOffshore.com

NORTH FALLS: PROJECT DESCRIPTION

NORTH FALLS
Offshore Wind Farm

DESIGN ENVELOPE

The design envelope of the offshore wind farm is defined by the location of the turbines and the location of the array cables. The design envelope will be defined by the location of the turbines and the location of the array cables. The design envelope will be defined by the location of the turbines and the location of the array cables.

PROJECT DESCRIPTION

North Falls has an offshore array area of 10.5km² with 105 turbines. The turbines are located in the North Falls area, which is located in the North Sea. The turbines are located in the North Falls area, which is located in the North Sea.

The turbines are located in the North Falls area, which is located in the North Sea. The turbines are located in the North Falls area, which is located in the North Sea.

The turbines are located in the North Falls area, which is located in the North Sea. The turbines are located in the North Falls area, which is located in the North Sea.

THE PROJECT: OFFSHORE

NORTH FALLS
Offshore Wind Farm

OFFSHORE ARRAY

The turbines are located in the North Falls area, which is located in the North Sea. The turbines are located in the North Falls area, which is located in the North Sea.

OFFSHORE INFRASTRUCTURE

The turbines are located in the North Falls area, which is located in the North Sea. The turbines are located in the North Falls area, which is located in the North Sea.

OFFSHORE CONSTRUCTION

The turbines are located in the North Falls area, which is located in the North Sea. The turbines are located in the North Falls area, which is located in the North Sea.

32.5km² Overall design area

105 turbines

224MW total capacity

At least 150m² of land will be used for the project

At least 400,000 tonnes of UK steel will be used for the project

www.NorthFallsOffshore.com

OFFSHORE PROJECT FACTS

- Up to 72 turbines
- 800m² of land will be used for the project
- 1 in 2 turbines will be installed
- 220km² of land will be used for the project
- 65km² of land will be used for the project
- 105 turbines
- 224MW total capacity
- At least 150m² of land will be used for the project
- At least 400,000 tonnes of UK steel will be used for the project

www.NorthFallsOffshore.com

THE PROJECT: LANDFALL

NORTH FALLS
Offshore Wind Farm

PROGRESS ON THE LANDFALL SEARCH AREA

The offshore export cables are brought to shore at a location known as 'landfall'.

The previous consultation highlighted a landfall search area, the location of which is between Causton-on-Sea and Littlebourne, which was defined through a process of engineering and environmental review and assessment. The process took into account a range of constraints including grid capacity, nature reserves, land use, historic buildings and technical feasibility.

The landfall selection process has continued following the submission of the grid connection location, and further site selection and consultation. This work has resulted in a landfall comprised of two land parcels, which will be the temporary construction site until a permanent landfall is located. The permanent landfall location will be identified, then within this area, and finalised in advance of the development consent application submission.



THE PROJECT: ONSHORE

NORTH FALLS
Offshore Wind Farm

ONSHORE DESCRIPTION

Onshore, North Falls will comprise underground cables carrying the power from the landfall to a new onshore substation, which will transform the electricity so it can enter the national grid via another substation to be constructed by National Grid. From here it will be delivered to the end users homes, businesses and industry.

Onshore project area
Over our previous consultation when we did not have a confirmed grid connection location, we assumed that the project would be located in a location which has not been used for other purposes. This area includes the temporary works programme for the cable landfall, construction cables and associated works as well as the project's onshore substation. The onshore project area lies entirely within the search area.

The area was identified through a site selection process which included checking technical constraints, such as designated habitats and areas of importance for nature conservation, ancient woodlands and historic buildings, while employing design, engineering and sustainability considerations with technical stakeholders.

The subsequent onshore search area is approximately 100m² and is located within the Huntingdonshire of Essex. It extends from the coast, between Causton-on-Sea and Littlebourne, approximately 4km inland.

Our ongoing site selection activity will look within this landfall search area to identify specific locations for each element of the onshore electrical infrastructure required for North Falls. These consultations will present the reasons for the work and offer opportunities to register the proposed location.

Onshore cable corridor
The onshore cable corridor is where buried export cables would be needed to transport the electricity generated by the wind farm from the landfall to the project's onshore substation. Further buried cables would connect that substation to the National Grid connection point.

The corridor runs approximately 2.2km inland from Causton-on-Sea on a roughly north-south alignment towards Littlebourne via Littlebourne, Littlebourne Green and Littlebourne Green.

Onshore cable construction
All onshore cables will be buried and once their construction is completed, the land above the route will be returned to landowners to use as they would have previously.

The construction works will comprise duct installation using a combination of types of trench excavation and trenching techniques, such as horizontal directional drilling (HDD) or trenching with an auger, driven and augered sites. Once the ducts are installed, the cables would be pulled through them and jointed within site pits located along the onshore cable corridor.

To facilitate construction, temporary facilities will be required including construction access, site to access temporary construction compounds and HDD compounds.

The cables would be laid in up to 12 trenches, within a temporary working width of up to 10m wide, or up to 12m above/below ground level, and cables would typically be 100mm in diameter.

Construction works at the point of landfall will comprise the installation of underground cable ducts using horizontal directional drilling (HDD) or another trenchless technique.

This will be done from the landward side, with the duct being bored through the seabed. This method will bury the cable ducts under the seabed floor. The ducts will be bored from the landward side, with the duct being bored through the seabed floor. This method will bury the cable ducts under the seabed floor. The ducts will be bored from the landward side, with the duct being bored through the seabed floor.

Although there would be temporary disruption during the project construction, there will be no permanent disruption to the local community. The disruption will be kept to a minimum by working in a way that causes the least disruption to the local community. The disruption will be kept to a minimum by working in a way that causes the least disruption to the local community.






www.NorthFallsOffshore.com

www.NorthFallsOffshore.com

THE PROJECT: ONSHORE

NORTH FALLS
Offshore Wind Farm

ONSHORE SUBSTATION

Onshore substation sites
North Falls will require an onshore substation for all the electrical equipment required to connect the project to the national grid. This will include electrical transformers, 110kV busbars, switchgear, control and energy storage, and other auxiliary equipment. The onshore substation will also include drainage and access infrastructure, and temporary landscaping such as fencing and woodland and landscape planting.

Onshore substation sites
The North Falls onshore substation would be located in an area we have called the 'onshore substation area', located east of the village of Littlebourne, east of Littlebourne Green. Land rights in this area are owned by the Huntingdonshire Council (HDC) around the onshore substation area to the east of the Huntingdonshire, adjacent to the coast. The location of the substation and the construction programme will be located within this area.



HOW TO RESPOND

NORTH FALLS
Offshore Wind Farm

We welcome your feedback and have provided a number of ways for you to respond to this consultation.

FACE-TO-FACE EVENTS

There will be a total of five face-to-face events at locations close to the project search area with feedback forms to fill in and return to the team onsite.

WEBINARS

We will be hosting two webinars on 4th and 11th November. To register to attend, we welcome you to visit our website.

ONLINE CONSULTATION

You can also respond to the online consultation by visiting www.northfalls-offshore.com.

Feedback form
We have over 100 questions about specific elements of the proposals throughout the onshore substation. As you go through the information, you are required to provide responses to each section.

Present
We will also be holding the feedback questionnaire and return it to the project address: FERRISBY North Falls. This address can be used for all postal responses.

Consultation map
There is also a consultation map if you would like to focus on a specific location, you can print it in on the map and have your comments there.

WEBSITE

Or feel free to send your comments or feedback to us via the online contact form on our website: www.northfalls-offshore.com.

EMAIL AND TELEPHONE

We also welcome emails to: contact@northfalls-offshore.com, or you can call us on 0800 254 5440.

www.NorthFallsOffshore.com

www.NorthFallsOffshore.com

BIODIVERSITY NET GAIN

The Environment Act 2021 includes a new duty on developers to make a net gain in biodiversity. This means that the overall biodiversity of the site must be improved compared to what it was before the development. This is done by creating new habitats, such as ponds, trees, and other features that support wildlife. The project will create new habitats, such as ponds, trees, and other features that support wildlife. The project will create new habitats, such as ponds, trees, and other features that support wildlife.





We thank you for taking the time to participate in this consultation.

www.NorthFallsOffshore.com

www.NorthFallsOffshore.com

Appendix N - Example brochure pages



<p>GRID</p> <p>Offshore Transmission Network Review</p> <p>A grid connection is a key requirement for wind offshore wind farms to be able to deliver the power to generation in the relevant transmission network.</p> <p>On 20th July 2022, the Government published the proposed Electricity Network Review (ENR) and a consultation on the Electricity Network Review (ENR) to the public. The ENR will review the way the electricity network is financed, operated and maintained, and will set out the government's vision for the network over the next 25 years. The ENR will also set out the government's vision for the way the network is financed, operated and maintained, and will set out the government's vision for the way the network is financed, operated and maintained.</p> <p>Project coordination</p> <p>As part of the ENR, the government will set out the way the network is financed, operated and maintained, and will set out the government's vision for the way the network is financed, operated and maintained.</p>	<p>Strategic review</p> <p>The strategic review is a key requirement for wind offshore wind farms to be able to deliver the power to generation in the relevant transmission network.</p> <p>North Falls grid connection</p> <p>The North Falls grid connection is a key requirement for wind offshore wind farms to be able to deliver the power to generation in the relevant transmission network.</p>	<p>Joint statement on consultation</p> <p>The joint statement on consultation is a key requirement for wind offshore wind farms to be able to deliver the power to generation in the relevant transmission network.</p> <p>Map showing proposed transmission route</p> <p>Joint statement on consultation</p> <p>The joint statement on consultation is a key requirement for wind offshore wind farms to be able to deliver the power to generation in the relevant transmission network.</p>
--	---	---

Appendix O - VR headsets



Appendix P - 3D visualisations



Appendix Q - Fact sheet

ABOUT NORTH FALLS OFFSHORE WIND FARM

OVERVIEW

North Falls Offshore Wind Farm is an extension to the existing 504 MW Greater Gabbard Offshore Wind Farm. The project is being developed in the southern North Sea, more than 20km off the UK coast.

The site is in two parts, which together cover a total area of 150km². The project is being developed by North Falls Offshore Wind Farm Limited, a joint venture company owned equally by SSE Renewables and RWE.

DESCRIPTION

North Falls has an offshore array area split into two sections within the Outer Thames Estuary, in the southern North Sea, its closest point to land is 22.5km from the Suffolk coast near Orford. In terms of offshore infrastructure, North Falls will comprise: wind turbines on foundations - with the number and types to be determined - and array cables connecting the turbines in strings to up to two offshore substations, also on foundations. Subsea export cables will bring the power to shore to a proposed landfall on the Essex coast, located between Clacton-on-Sea and Pritton-on-Sea.

From landfall, power will be transmitted by underground cables to a new onshore substation. From there, it will be further transported to a National Grid substation and then on to the national grid. A grid connection in Tendring, Essex was offered to the project by the National Grid so the project has been working to design the best way to bring power in to that connection. The existing regulatory regime covers all offshore wind farms having a radial connection from the offshore site to the national grid. All our design, engineering, survey and planning work to date has followed this approach.

The project will be refined through further design, environmental assessment and consultation work prior to the final proposals with the aim of submitting a development consent order application in 2023.

PROJECT BENEFITS

As well as helping to protect the environment, improve the nation's energy security and contribute to the fight against climate change, North Falls will bring numerous local benefits by way of jobs, enhancing the local economy and community support. As an extension project, North Falls would aim to emulate the initiatives of its sister project Greater Gabbard and therefore create similar, if not greater, socio-economic benefits.

- Greater Gabbard represented a total investment of around £1.5 billion and a new facility was constructed in 1,000m² facilities for the project's operations & maintenance base.
- Around 100 long term, skilled jobs were created to operate and maintain the wind farm, with 95% of these recruited from the local area.
- These roles were in addition to the hundreds of jobs created during construction.
- Greater Gabbard has engaged 10 apprentices since the start of operation, recruited eight pipeline trainees, offered junior engineer roles and employed an fishermen on seven trawler vessels as part of the drive to land locally skilled people to fill roles.
- Since starting operations, the project has assisted more than 1750,000 in community funds and local training initiatives.

AT A GLANCE

 UP TO 72 <small>TURBINES</small>	 £1.5 <small>BILLION</small>	 22.5 KM <small>DISTANCE TO SHORE (CLONESIT)</small>	 <small>North Falls is being developed by a joint venture company owned equally by SSE Renewables and RWE.</small>
 SUBMISSION IN 2023 <small>The Development Consent Order application and supporting environmental assessments and other documents is currently submitted for submission in 2023.</small>	 POWER MORE THAN 400K UK HOMES <small>Once operational it could generate enough green energy to power the equivalent of more than 400,000 UK homes.</small>	 50GW <small>OF OFFSHORE WIND BY 2030</small> <small>Contributing to the UK government's ambitions of 50GW of offshore wind by 2030 (current figure is around 10,300W)</small>	

FIND OUT MORE

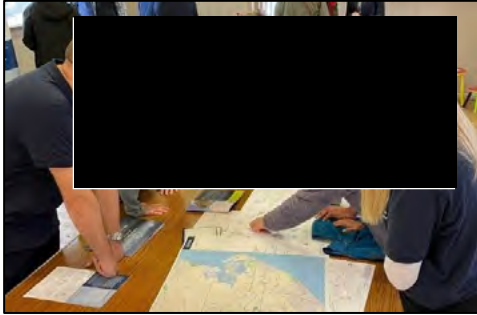
For more information on the project visit www.northfalls offshore.com

CONTACT US

Telephone: 0800 234 5340
 Email: contact@northfalls offshore.com
 Post: FREEPOST North Falls

NORTH FALLS
Offshore Wind Farm

Appendix R - A2 copies of project maps



Appendix S - Children's colouring-in sheet



Appendix T- KiT card



KEEP IN TOUCH

Telephone: 0800 254 5340
Email: contact@northfallsoffshore.com
Post: FREEPOST North Falls
Visit: www.northfallsoffshore.com

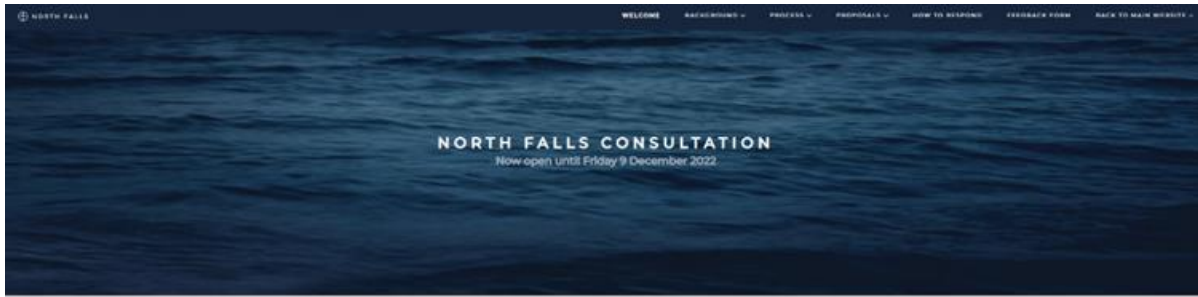
Appendix U - North Falls branded material



Appendix V - wobble board



Appendix W - Consultation website example pages



North Falls Offshore Wind Farm, an extension project to the existing 504 MW Greater Cabbard Offshore Wind Farm, is being developed in the southern North Sea more than 20km off the UK coast. Its site is in two parts which together cover a total area of 150km². North Falls is being developed by North Falls Offshore Wind Farm Limited, a 50/50 joint venture company owned by SSE Renewables and RWE.

This is the second public consultation about the project and it is open from Monday 17 October until Friday 9 December 2022.



Offshore Wind in the UK

In the past years the capacity of the UK's offshore wind farms has increased from only one gigawatt (GW) in 2009 to almost 10,000 in early 2022. The more per megawatt hour of offshore wind have been driven down by decreasing costs, the sector already supplies more than 28,000 people, and it supplies an average around 15% of the nation's electricity. In short, the offshore wind sector has become one of Britain's most profitable business sectors.

However, it is well known as the industry needs wide policy of support for further growth in the UK and for export internationally. In the Foreign Security Strategy, the Government announced its ambition for the UK to reach 50GW by 2030. This ambition goes even further than the target that was agreed in 2009 between the offshore wind sector and the UK Government, which stated for 10GW of installed capacity by 2020.

The UK Government's new plan to reach 50GW of installed capacity by 2030 is a central plank of Britain's green recovery after the economic and pandemic and given the economic energy crisis and its carbon emissions. The plan to increase the nation's "windy back bone" for its energy needs to include energy grid building, legal and administrative changes.

With the green agenda in the focus, it is high time to deliver on the promise of 50GW by 2030 and reach our net-zero target. Projects like North Falls will play an essential role in meeting this target. We intend to work closely with all our stakeholders, government, local communities and the supply chain to make our work a positive contribution to the nation's net-zero ambitions, energy security and economic prosperity.

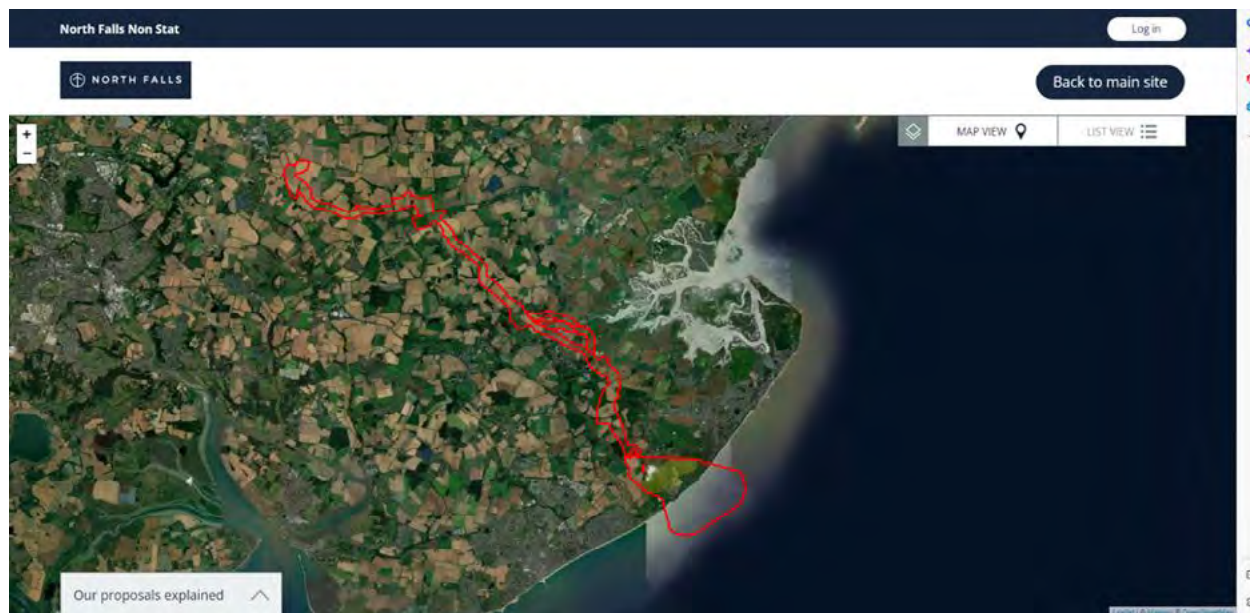
Feedback Questions

Do you have any general comments you would like to make about the UK's offshore wind energy ambitions?

[+ SAVE](#)

CONSULTATION

Appendix X - Interactive consultation map



Appendix Y - Feedback form

DATA PRIVACY NOTICE

Camargue Group Limited is supporting North Falls Offshore Wind Farm Limited with its consultation process. Camargue Group Limited ("we" or "us") is committed to ensuring the privacy of your personal information. In this notice we explain how we hold, process and retain your personal data.

HOW WE USE YOUR PERSONAL DATA

We may process information that you provide to us. This data may include the following:

- Your name;
- Your address;
- Your telephone number;
- Your email address;
- Your employer or any group on whose behalf you are authorised to respond; and
- Your feedback in response to the North Falls Offshore Wind Farm Non-Statutory Consultation.

We will use your personal data for the following purposes:

- To record accurately and analyse any questions you raise during the consultation or feedback you have provided in response to the consultation;
- To report on our consultation, detailing what issues have been raised and how we have responded to that feedback (please note that the information contained in the consultation report will be aggregated and will not identify specific individuals);
- To personalise communications with individuals we are required to contact as part of future consultation or communications;
- The legal basis for processing this data is that it is necessary for our legitimate interest, namely for the purpose of running the consultation process, analysis and reporting are accurate and comprehensive;
- In addition to the specific purposes for which we may process your personal data set out above, we may also process any of your personal data where such processing is necessary for compliance with a legal obligation to which we are subject.

PROVIDING YOUR PERSONAL DATA TO OTHERS

We may provide your personal data to the following recipients:

- North Falls Offshore Wind Farm Limited and SSE Renewables and RWE on whose behalf we are collecting your feedback in order to analyse and report on the responses received;
- Third party service providers and professional advisers who provide services to North Falls Offshore Wind Farm Limited and SSE Renewables and RWE in connection with the consultation;
- Any relevant local planning authority or council;
- Our insurers/ professional advisers. We may disclose your personal data to our insurers and/or professional advisers insofar as reasonably necessary for the purposes of obtaining and maintaining insurance cover, managing risks, obtaining professional advice and managing legal disputes.

RETAINING AND DELETING PERSONAL DATA

Personal data that we process for any purpose shall not be kept for longer than is necessary for that purpose. Unless we contact you and obtain your consent for us to retain your personal data for a longer period, we will delete your personal data as soon as practicable following the outcome of the consultation process.

We may retain your personal data where such retention is necessary for compliance with a legal obligation to which we are subject.

YOUR RIGHTS

The rights you have in relation to your personal information under data protection law are:

- The right to access;
- The right to rectification;
- The right to erasure;
- The right to restrict processing;
- The right to object to processing;
- The right to data portability; and
- The right to complain to a supervisory authority.

You may exercise any of your rights in relation to your personal data by writing to us using the details below.

OUR DETAILS

We are registered in England and Wales under registration number 3954008, and our registered office is at Eagle Tower, Manpower Inc, Cheltenham GL50 1TA.

You can contact us:

- by freephone 0800 254 5340
- by email: contact@northfallsoffshore.com
- by letter: FREEPOST, North Falls

NORTH FALLS
Offshore Wind Farm

FEEDBACK FORM

Comments due by Friday 9th December 2022

CONTACT DETAILS

Name

Address

Postcode

Telephone number

Email address

Do you represent an organisation? If so, which one?

Do you wish to be kept updated on the project via email?
 Yes No

FIND OUT MORE

For more information about the project visit www.northfallsoffshore.com

CONTACT US

Telephone: 0800 254 5340
 Email: contact@northfallsoffshore.com
 Post: FREEPOST North Falls



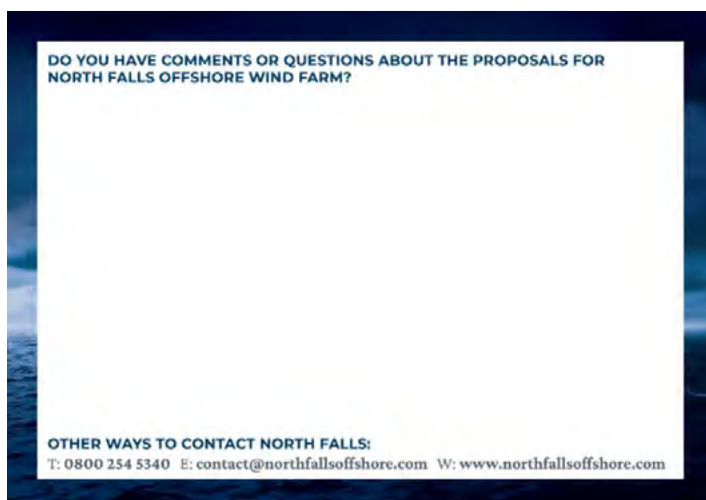
- Do you have any general comments you would like to make about the UK's offshore wind energy ambitions?
- Do you believe that more offshore wind will:
 - Reduce energy costs for the UK? Yes No
 - Improve the nation's energy security? Yes No
- Do you believe that offshore wind has a key role to play in the UK's energy future?
 - Yes No
 - Why/why not?
- Do you have any preference as to how North Falls could engage with and benefit the local community?
- Do you have any comments or questions about North Falls' involvement with the Offshore Transmission Network Review?
- Do you have any comments about the location of the proposed North Falls grid connection?
- Do you have any questions about the development consent application process?
- Do you have any comments about the purpose of the Preliminary Environmental Information Report?

9. Do you have any comments or suggestions about how North Falls is coordinating with other major infrastructure projects in the region?
10. Do you have any comments or questions about the concept of a design envelope?
11. Do you have any comments or suggestions in relation to the offshore location or offshore infrastructure of North Falls? This could be comments on fisheries, components, marine ecology, offshore construction or anything else you feel relevant.
12. Looking at the landfall compound zone, is there anything you feel would be relevant for our project to know about this particular area to help us select our temporary construction compound location?
13. Do you have any comments or questions about the methodologies proposed to be used to construct the onshore underground cable?
14. Do you have any information about the onshore substation zone that could help in finalising the location for the onshore substation?
15. Do you have any comments or suggestions in relation to the onshore cable route for North Falls? This could be comments on the route, onshore ecology or anything else you feel relevant.
16. Although not feasible under existing regulations, do you have any comments or questions on the concept of an offshore grid connection or its associated onshore infrastructure?

Appendix Z - Feedback postcard



Freepost NORTH FALLS





NORTH FALLS

Offshore Wind Farm

APPENDIX E

E.30

*Risk assessment of stage 2 (pre-application)
consultation event venues*



Details	Y or N where applicable	Information
Type of Venue		Village hall
Name of venue		Ardleigh village hall Station road Ardleigh Essex
Address including postcode		CO7 7RS
Address and number of the nearest police station		British Transport Police Colchester North rail station north station Road Essex hall road Colchester CO1 1XD
Nearest hospital		Colchester Hospital Turner Road Colchester CO4 5JL
Nearest train station/underground for consultation staff		Manningtree Train station Station Approach off A137 Manningtree CO11 2LH
Is this walking distance from the venue?		3.2Miles
Will there be a trained first aider at the event?		Conquest personnel
First Aid Kit Defibrillator		Conquest will provide first aid management and supply a first aid kit and defibrillator at each event.
Does the venue have an up-to-date Risk Assessment Form, Insurance Certificate, and fire safety certificate?		Can you ask them to send this to the client who booked the venue unless they can give you a copy?
Is the venue easy to find?	Yes	
Are there helpful directions to note? e.g. is the entrance concealed behind the church, sat nav doesn't direct you to the venue		Just past the Rail crossing on your left
Could there be any confusion with neighbouring venues? If so, what?	No	
Is there adequate mobile phone reception at the venue?	Yes	
Is WIFI available at the venue? If so, is there a passcode?	Yes	
Does the venue hire any electric equipment, i.e. projector screens?	No	
Are there protest/ demonstration signs nearby? Signs in windows/ garden	Yes	There are some posters outside the hall saying Stop Power Lines.
RISK		
Does the venue have a licence to sell alcohol? (if so, it will be displayed above the main entrance)	No	



Does the venue have marked fire exits?	Yes	
Details	Y or N where applicable	Information
Does the venue have additional rooms that could be used as a staff room/breakout room? Is it lockable?	Yes	We can use the committee room
How big is the room (approx in metres x metres)?		20 x 10
What is the stated (standing) capacity of the venue?		150
Does the venue have disabled access?	Yes	
Does the venue have disabled toilets?	Yes	
Does the venue have kitchen facilities to make drinks? Are there kettles, cups etc.?	Yes	Yes To all
Does the venue have any furniture? i.e. tables and chairs; if so, how many are available?		17 Large rectangular trestle table • Large square fixed-leg tables • Small, fixed-leg rectangular tables 100 Stacking chairs • Other of interest
Is the venue used for other activities?	No	
Does the venue have a dedicated muster point in case of emergencies?	Yes	There is a small play area on the left-hand side of the building.
fire alarms	Yes	
How many power points are in the room	8	
Is onsite parking available? If so, how many spaces?	Yes	Around 60 cars
Is this free or paid for?	Yes	
How many access points are there to the room?	3	1 main Entrance 2 fire doors
Are there parking bays for disabled people?	Yes	2
Is there a potentially suitable external location to display a poster?	Yes	
Is there on-street parking? If so, how many spaces? Are there any public car parks nearby?		Not Needed



Does it have suitable exterior lighting at the entrance and car park?	Yes	Security lighting
Details	Y or N where applicable	Information
Logistics		
Is there access for the van to the venue?	Yes	We can unload at the side of the building.
Is there adequate space to easily unload and get quickly into the venue? Please indicate any concerns.	Yes	
Is there any height restriction? Barriers?	No	
Is there parking for the van?	Yes	
If not, is there any suitable secure parking nearby? Please detail timings and provisions of nearby parking when needed.		
Are there lifts? Suitability for stock		
Do you find this venue suitable for the required function? Please include any concerns.	Yes	
Checklist		
Have you taken interior photographs of the venue?	Yes	
All rooms booked?		
Please include any photographs of any concerns within or the venue's exterior.		
Any additional information		The road in the village is shut at one end. Your sat nav should detour you around. If not, you must drive through Great Bromley, which will put you on the right side of the village to the village hall just over the rail crossing.



Front Entrance



Main Hall



Kitchen



Committee Room



Main car park



Overflow car park



Main Red Symbol is where the road is closed



Details	Y or N where applicable	Information
Type of Venue		Village hall
Name of venue		Great Bromley Village Hall Person Hill Great Bromley Colchester
Address including postcode		CO7 7JA
Address and number of the nearest police station		Essex police – Colchester 10 Southway. Colchester CO3 3BU
Nearest hospital		Colchester Hospital Turner Road Colchester CO4 5JL
Nearest train station/underground for consultation staff		Alresford Train Station Alresford Colchester CO7 8BY
Is this walking distance from the venue?		
Will there be a trained first aider at the event?		Conquest personnel
First Aid Kit Defibrillator		Conquest will provide first aid management and supply a first aid kit and defibrillator at each event.
Does the venue have an up-to-date Risk Assessment Form, Insurance Certificate, and fire safety certificate?		Can you ask them to send this to the client who booked the venue unless they can give you a copy?
Is the venue easy to find?	Yes	
Are there helpful directions to note? e.g. is the entrance concealed behind the church, sat nav doesn't direct you to the venue		Sat nav
Could there be any confusion with neighbouring venues? If so, what?	No	
Is there adequate mobile phone reception at the venue?	Yes	
Is WIFI available at the venue? If so, is there a passcode?	Yes	
Does the venue hire any electric equipment, i.e. projector screens?	No	
Are there protest/ demonstration signs nearby? Signs in windows/ garden	No	
RISK		
Does the venue have a licence to sell alcohol? (if so, it will be displayed above the main entrance)	No	



Does the venue have marked fire exits?	Yes	
Details	Y or N where applicable	Information
Does the venue have additional rooms that could be used as a staff room/breakout room? Is it lockable?	Yes	The Small Hall we can use
How big is the room (approx in metres x metres)?		17 x 9 Metres
What is the stated (standing) capacity of the venue?		100
Does the venue have disabled access?	Yes	
Does the venue have disabled toilets?	Yes	
Does the venue have kitchen facilities to make drinks? Are there kettles, cups etc.?	Yes	Yes, to all, there is a boiler for hot drinks
Does the venue have any furniture? i.e. tables and chairs; if so, how many are available?		24 Large rectangular trestle table • Large square fixed-leg tables 10 Small, fixed-leg rectangular tables 200 Stacking chairs • Other of interest
Is the venue used for other activities?	No	
Does the venue have a dedicated muster point in case of emergencies?	Yes	By the Cricket pitch
fire alarms	Yes	
How many power points are in the room	6	
Is onsite parking available? If so, how many spaces?	Yes	60 +
Is this free or paid for?	Yes	
How many access points are there to the room?	5	1 Main Entrance 4 Fire Doors
Are there parking bays for disabled people?	No	
Is there a potentially suitable external location to display a poster?	Yes	
Is there on-street parking? If so, how many spaces?	No	
Are there any public car parks nearby?	No	



Does it have suitable exterior lighting at the entrance and car park?	Yes	Security Lights
Details	Y or N where applicable	Information
Logistics		
Is there access for the van to the venue?	Yes	We can unload at the front of the village hall
Is there adequate space to easily unload and get quickly into the venue? Please indicate any concerns.	Yes	
Is there any height restriction? Barriers?	No	
Is there parking for the van?	Yes	
If not, is there any suitable secure parking nearby? Please detail timings and provisions of nearby parking when needed.		
Are there lifts? Suitability for stock	No	Not Needed
Do you find this venue suitable for the required function? Please include any concerns.	Yes	
Checklist		
Have you taken interior photographs of the venue?	Yes	
All rooms booked?		
Please include any photographs of any concerns within or the venue's exterior.		
Any additional information		



Front Entrance



Main hall



Kitchen



Small hall



First Parking area



Second Parking area



Details	Y or N where applicable	Information
Type of Venue		Community hall
Name of venue		McGrigor Hall
Address including postcode		CO139EB
Address and number of the nearest police station		Thorpe Le Soken Police Station 31 Landermere Road Thorpe Le Soken Clacton on sea CO16 0LQ
Nearest hospital		Clacton on Sea Hospital Tower Road Clacton on Sea CO15 1LH
The nearest train station for consultation staff		Frinton-on-Sea train station Frinton-on-Sea CO13 9JT
Is this walking distance from the venue?	Yes	
Will there be a trained first aider at the event?		Conquest personnel
First Aid Kit Defibrillator		Conquest will provide first aid management and supply a first aid kit and defibrillator at each event.
Does the venue have an up-to-date Risk Assessment Form, Insurance Certificate, and fire safety certificate?		Can you ask them to send this to the client who booked the venue unless they can give you a copy?
Is the venue easy to find?	Yes	
Are there helpful directions to note? e.g. is the entrance concealed behind the church, sat nav doesn't direct you to the venue		Sat nav good
Could there be any confusion with neighbouring venues? If so, what?	Yes	On the opposite side of the road is the Memorial Club. There is also a Methodist hall just a short walk up the road.
Is there adequate mobile phone reception at the venue?	Yes	
Is WIFI available at the venue? If so, is there a passcode?	Yes	
Does the venue hire any electric equipment, i.e. projector screens?	No	
Are there protest/ demonstration signs nearby? Signs in windows/ garden	No	
RISK		
Does the venue have a licence to sell alcohol? (if so, it will be displayed above the main entrance)	No	



Does the venue have marked fire exits?	Yes	
Details	Y or N where applicable	Information
Does the venue have additional rooms that could be used as a staff room/breakout room? Is it lockable?		Just the Kitchen
How big is the room (approx in metres x metres)?		17 x 9
What is the stated (standing) capacity of the venue?		200
Does the venue have disabled access?	Yes	
Does the venue have disabled toilets?	Yes	
Does the venue have kitchen facilities to make drinks? Are there kettles, cups etc.?	Yes	Yes to all
Does the venue have any furniture? i.e. tables and chairs; if so, how many are available?		<ul style="list-style-type: none"> 20 Large rectangular trestle table • Large square fixed-leg tables • Small, fixed-leg rectangular tables 200 Stacking chairs • Other of interest
Is the venue used for other activities?	Yes	There will be a meeting around the back of the hall between 7.00 pm till 8.30 in the meeting room, but it will not interrupt the Consultation.
Does the venue have a dedicated muster point in case of emergencies?	Yes	The opposite side of the road by the Methodist Church
fire alarms	No	Smoke Alarms
How many power points are in the room	7	
Is onsite parking available? If so, how many spaces?	Yes	Only parking for about 10 cars at the back of the hall
Is this free or paid for?	Yes	
How many access points are there to the room?	3	1 main Entrance 2 Fire doors
Are there parking bays for disabled people?	No	
Is there a potentially suitable external location to display a poster?	Yes	
Is there on-street parking? If so, how many spaces? Are there any public car parks nearby?	Yes	At least 20



Does it have suitable exterior lighting at the entrance and car park?	Yes	Street Lighting
Details	Y or N where applicable	Information
Logistics		
Is there access for the van to the venue?	Yes	We can unload at the front of the building or from the small car park at the back.
Is there adequate space to easily unload and get quickly into the venue? Please indicate any concerns.	Yes	
Is there any height restriction? Barriers?	No	
Is there parking for the van?	Yes	
If not, is there any suitable secure parking nearby? Please detail timings and provisions of nearby parking when needed.	No	
Are there lifts? Suitability for stock	No	Not Needed
Do you find this venue suitable for the required function? Please include any concerns.	Yes	
Checklist		
Have you taken interior photographs of the venue?	Yes	
All rooms booked?		
Please include any photographs of any concerns within or the venue's exterior.		
Any additional information		



Front Of Building



Main Hall



Kitchen



Small car park at the Back



There is also Street car parking at the Back.



Details	Y or N where applicable	Information
Type of Venue		Village hall
Name of venue		Tendring village hall Tendring Clacton-on-Sea
Address including postcode		CO16 0BG
Address and number of the nearest police station		Thorpe Le Soken Police Station 31Landermere road Thorpe-Le-Soken, Clacton-on-Sea CO16 0LQ
Nearest hospital		Colchester Hospital Turner Road Colchester CO4 5JL
Nearest train station/underground for consultation staff		Weeley train station Weeley, Clacton-on-Sea CO16 9HY
Is this walking distance from the venue?		
Will there be a trained first aider at the event?		Conquest personnel
First Aid Kit Defibrillator		Conquest will provide first aid management and supply a first aid kit and defibrillator at each event.
Does the venue have an up-to-date Risk Assessment Form, Insurance Certificate, and fire safety certificate?		Can you ask them to send this to the client who booked the venue unless they can give you a copy?
Is the venue easy to find?	Yes	
Are there helpful directions to note? e.g. is the entrance concealed behind the church, sat nav doesn't direct you to the venue		Opposite The church sat nav is good
Could there be any confusion with neighbouring venues? If so, what?	No	
Is there adequate mobile phone reception at the venue?	Yes	
Is WIFI available at the venue? If so, is there a passcode?	Yes	
Does the venue hire any electric equipment, i.e. projector screens?	No	
Are there protest/ demonstration signs nearby? Signs in windows/ garden	No	
RISK		
Does the venue have a licence to sell alcohol? (if so, it will be displayed above the main entrance)	No	



Does the venue have marked fire exits?	Yes	
Details	Y or N where applicable	Information
Does the venue have additional rooms that could be used as a staff room/breakout room? Is it lockable?	No	We can use the Kitchen
How big is the room (approx. in metres x metres)?		13 x 11
What is the stated (standing) capacity of the venue?		100
Does the venue have disabled access?	Yes	
Does the venue have disabled toilets?	Yes	
Does the venue have kitchen facilities to make drinks? Are there kettles, cups etc.?	Yes	Yes to all
Does the venue have any furniture? i.e. tables and chairs; if so, how many are available?		<ul style="list-style-type: none"> 12 Large rectangular trestle table • Large square fixed-leg tables 14 Small, fixed-leg rectangular tables 60 Stacking chairs • Other of interest
Is the venue used for other activities?	No	
Does the venue have a dedicated muster point in case of emergencies?	Yes	The car park at the rear of the building
fire alarms	Yes	
How many power points are in the room	6	
Is onsite parking available? If so, how many spaces?	Yes	Around 40 spaces
Is this free or paid for?	Yes	
How many access points are there to the room?	3	1 Main Entrance 2 Fire doors
Are there parking bays for disabled people?	No	
Is there a potentially suitable external location to display a poster?	No	
Is there on-street parking? If so, how many spaces?	No	
Are there any public car parks nearby?	No	



Does it have suitable exterior lighting at the entrance and car park?	Yes	Security lighting
Details	Y or N where applicable	Information
Logistics		
Is there access for the van to the venue?	Yes	We can unload at the rear of the Building through a fire door.
Is there adequate space to easily unload and get quickly into the venue? Please indicate any concerns.	Yes	
Is there any height restriction? Barriers?	No	
Is there parking for the van?	Yes	
If not, is there any suitable secure parking nearby? Please detail timings and provisions of nearby parking when needed.	No	
Are there lifts? Suitability for stock	No	Not Needed
Do you find this venue suitable for the required function? Please include any concerns.	Yes	
Checklist		
Have you taken interior photographs of the venue?	Yes	
All rooms booked?		
Please include any photographs of any concerns within or the venue's exterior.		
Any additional information		



Front Entrance



Main hall



Kitchen



Rear car park



The church opposite the village hall



Details	Y or N where applicable	Information
Type of Venue		Woman's Institute Hall
Name of venue		Thorpe Le Soken women's Institute hall High street Thorpe Le Soken
Address including postcode		CO16 0EF
Address and number of the nearest police station		Thorpe Le Soken Police Station 31 Landermere road Thorpe le Soken Clacton-On-sea CO16 0LQ
Nearest hospital		Colchester Hospital Turner Road Colchester CO4 5JL
Nearest train station for consultation staff		Thorpe Le Soken train station Thorpe Le Soken Clacton-on-Sea CO16 0HJ
Is this walking distance from the venue?		
Will there be a trained first aider at the event?		Conquest personnel
First Aid Kit Defibrillator		Conquest will provide first aid management and supply a first aid kit and defibrillator at each event.
Does the venue have an up-to-date Risk Assessment Form, Insurance Certificate, and fire safety certificate?		Can you ask them to send this to the client who booked the venue unless they can give you a copy?
Is the venue easy to find?	Yes	
Are there helpful directions to note? e.g. is the entrance concealed behind the church, sat nav doesn't direct you to the venue		Next door to Margery's Nursery school has you come into the high street.
Could there be any confusion with neighbouring venues? If so, what?	No	
Is there adequate mobile phone reception at the venue?	Yes	
Is WIFI available at the venue? If so, is there a passcode?	No	
Does the venue hire any electric equipment, i.e. projector screens?	No	
Are there protest/ demonstration signs nearby? Signs in windows/ garden	No	
RISK		
Does the venue have a licence to sell alcohol? (if so, it will be displayed above the main entrance)	No	



Does the venue have marked fire exits?	Yes	
Details	Y or N where applicable	Information
Does the venue have additional rooms that could be used as a staff room/breakout room? Is it lockable?	No	We can use the kitchen
How big is the room (approx in metres x metres)?		17 x 10 Metres
What is the stated (standing) capacity of the venue?		100
Does the venue have disabled access?	Yes	
Does the venue have disabled toilets?	Yes	
Does the venue have kitchen facilities to make drinks? Are there kettles, cups etc.?	Yes	Yes to all
Does the venue have any furniture? i.e. tables and chairs; if so, how many are available?		<ul style="list-style-type: none"> 14 Large rectangular trestle table • Large square fixed-leg tables 6 Small, fixed-leg rectangular tables 150 Stacking chairs • Other of interest
Is the venue used for other activities?	No	
Does the venue have a dedicated muster point in case of emergencies?	Yes	Out the front of the building on the other side of the road
fire alarms	None	
How many power points are in the room	3	
Is onsite parking available? If so, how many spaces?	4	
Is this free or paid for?	Yes	
How many access points are there to the room?	3	1 Main Entrance 2 Fire doors
Are there parking bays for disabled people?	No	
Is there a potentially suitable external location to display a poster?	No	
Is there on-street parking? If so, how many spaces?	Yes	Limited depending on the day
Are there any public car parks nearby?	No	



Does it have suitable exterior lighting at the entrance and car park?	Yes	Security Lighting Street Lights
Details	Y or N where applicable	Information
Logistics		
Is there access for the van to the venue?	Yes	We will have one of the parking spaces at the front of the building.
Is there adequate space to easily unload and get quickly into the venue? Please indicate any concerns.	Yes	At the front
Is there any height restriction? Barriers?	No	Parking could be a problem.
Is there parking for the van? If not, is there any suitable secure parking nearby? Please detail timings and provisions of nearby parking when needed.	Yes	
Are there lifts? Suitability for stock	No	Not Needed
Do you find this venue suitable for the required function? Please include any concerns.	Yes	When I went to the hall, there were only a few places to park, and the traffic was very busy, being a high street.
Checklist		
Have you taken interior photographs of the venue? All rooms booked?	Yes	
Please include any photographs of any concerns within or the venue's exterior.		
Any additional information		



Front Entrance



Main hall



Kitchen



High Street, where we can park





NORTH FALLS

Offshore Wind Farm

APPENDIX E

E.31

*Email thanking people for participation in stage 2
(pre-application) consultation*

From: [REDACTED]
Sent: Monday, December 12, 2022 3:51 PM
Subject: North Falls non-statutory consultation now closed - thank you for your input

This is the first time you've received an email from this sender. Make sure this is someone you trust.

Good afternoon

I am writing to thank you for your input into the North Falls pre-application consultation which closed on Friday.

We had around 250 attend one or more of our five face-to-face consultation events and two webinars, and more than 1400 visits to the consultation portal. We have received feedback from a total of 57 individuals, organisations and statutory bodies (including Councils).

We will take the coming period (before and after Christmas) to review all the responses and inputs, and will publish a consultation summary and report in the New Year.

We will also be holding a further consultation in 2023 – on our full Preliminary Environmental Information Report - so will ensure you receive details about that when we are at that stage.

Kind regards
Sue

Sue Vincent External
Communications
North Falls Offshore Wind Farm



NORTH FALLS

Offshore Wind Farm

APPENDIX E

E.32

*Summary of stage 2 (pre-application)
consultation on website*

CONSULTATION RESULTS

The information on this page was correct at the time of publishing (December 2022). The project has since evolved and we would encourage you to read our [September update](#) for more information.

Here are some key statistics about our consultation:



12,000

invitations mailed



107,255

impressions from online advertising



Five

public events



Two

webinars



1,400

visits to consultation portal



71

pieces of feedback

Issues and what we are doing

Numerous issues were raised during the consultation that will be covered more fully in the North Falls Preliminary Environmental Information Report which is now under production and will be subject to consultation in 2023. This is a high level summary of the key issues raised, all of which will be considered as the proposals are progressed.

Issue raised during consultation

Construction traffic

Respondents raised concerns around construction traffic, recognising the local area has many narrow roads unsuitable for an increase in traffic. Particularly the likes of HGVs and in areas such as the village of Thorpe-le-Soken.

What we are doing

North Falls is working on an outline Construction Traffic Management Plan (CTMP) with details of how HGV and other vehicle movements will be controlled, monitored and enforced during construction. Amongst other details it will include how accesses and offsite highway works will be designed and how a temporary haul road within the construction corridor will minimise the amount of traffic on the local road network.

Flooding

Points were raised during the consultation around flooding, both the possibility of it having an impact on construction, and conversely the impact construction could have on flooding.

North Falls has carried out assessments on geology, ground conditions, hydrology and flood risk for each of the project's construction, operation and decommissioning phases. This information will inform a Flood Risk Assessment, which will establish whether the onshore infrastructure may be affected by current or future flooding, whether it will increase the flood risk elsewhere and what mitigation can be implemented to reduce it.

Access to footpaths, bridleways and the coastal promenade during construction

People wanted to know what impact construction might have on recreational routes, such as the promenade between Frinton-on-Sea and Holland-on-Sea, bridleways and footpaths along the cable route.

We are identifying each recreational route in the area of our proposed construction works and will incorporate plans to minimise disruption either through use of specific construction techniques, alternative routes or by careful timing of activities.

Water main north of Thorpe Road

A specific point was brought up by a few respondents relating to a cast iron water main north of Thorpe Road

As the water main north of Thorpe Lane is owned by the local water company, it would not be within the project's remit to remove or replace it. However we will liaise with the water company so they are aware of our plans and the feedback we have received during consultation.

Land drainage

Some comments received related to water drainage in the area, with specific mention of a drainage ditch at Damants Farm Lane.

A land drainage consultant will be appointed to develop pre-and post-construction drainage plans in consultation with local landowners for all affected areas of the cable route. Additionally, land drainage systems will be maintained during construction and land drainage would be reinstated once construction is complete as part of the reinstatement phase.

Landscaping around substation

Respondents asked about how the substation would be landscaped as there are concerns around its visual impact. There were also requests for more visualisations to understand the size and how it could look.

We are following National Infrastructure Commission guidance (published February 2020), which sets out design principles for nationally significant infrastructure projects such as North Falls. These mean we will consider the cumulative impacts of other proposed substations and factors including substation orientation, fencing and associated landscaping and vegetation such as native woodland planting and hedgerows. Our site selection principles are also aligned to the Horlock Rules guidance on siting and design of substations.

North Falls has noted requests to better understand how the substation could look and will include more photographs with examples of similar substations and visual representations in future consultation(s).

Local ecology, birds and wildlife

Some who provided consultation responses expressed concern about the impacts of construction on the local area's ecology, wildlife and bird, with a particular focus on any endangered species.

Comprehensive ecological surveys have been undertaken across the whole proposed development area recording the presence of any habitat, bird species or wildlife, including insects, that is either protected in law or notable due to its rare, scarce or vulnerable status. This information is being used to inform the baseline for planning and full details of how it has been considered will be included in the preliminary environmental information report which we will consult on this year.

Use of HDD during construction

While most feedback indicated people were content with the use of horizontal directional drilling during construction, there were some questions around the process and potential for noise or pollution.

More details around the specifics of the HDD process will be included in the upcoming PEIR but the concerns have been noted and will be addressed. For example by the use of an inert clay as drilling fluid and pre-work noise assessments to ascertain the need for temporary noise mitigation, which would be put in place for the duration of activity.

Communication during construction

There were requests for clear communications during the construction period.

We can confirm this will be a priority to ensure the local community is aware of what is happening and when. Communications methodologies will include direct letters, newsletters and eNews, a 24-hour phone line and local briefings.

Grid connection location

Numerous respondents, particularly those potentially impacted, expressed opposition to the location of the grid connection near Ardeleigh. The concerns were around its size, cumulative impacts, and distance from electricity users. While not part of the North Falls remit, there were also concerns around the infrastructure related to East Anglia GREEN project.

North Falls has noted all the objections to the existing location and has shared feedback with National Grid, who provided the project with its grid connection. While North Falls continues to work towards the existing grid connection location as that is the only current option, in parallel the project remains committed to the OTNR process with more details on that below.

Horsley Cross car boot sale

More than one consultee mentioned the Horsley Cross car boot sale as something that could be impacted by the proposed cable route.

The fact this event happens each Friday during summer has been noted and will be referenced in our development consent order application. While the exact cable route has yet to be confirmed, if it is close to the car boot sale site, we would work with organisers to minimise any potential disruption from construction activity.

Residential gardens

There was concern for some local residents about the cable route potentially going through back or front gardens.

We have reviewed the initial route which did include corners of some residential gardens, however it has now been narrowed down and amended to completely avoid residential gardens.

Offshore grid connection

A number of people asked why we cannot just connect the project offshore and why that is not being considered.

There are numerous complex changes needed to regulations and legislation in order for offshore wind farms to be able to connect their projects offshore. North Falls continues to play a role in the Offshore Transmission Network Review which aims to deliver the necessary changes. As such we have committed to exploring coordinated network designs with along with four other projects in East Anglia: Five Estuaries, National Grid Electricity Transmission's Sea Link, and National Grid Ventures' EuroLink and Nautilus, and we continue to work together on this process.

Cooperation with Five Estuaries

There were a number of requests from those responding to the consultation for cooperation with Five Estuaries as both projects are in the same location.

Due to the location of the two projects, North Falls will continue to work closely with Five Estuaries on key elements such as cable corridor selection (to optimise both onshore routes), onshore substation location, environmental surveys and by sharing consultation feedback.

Community support

The consultation invited ideas as to how it could support the local community in future.

Plenty of good ideas about how North Falls can support the local community - such as sponsorships and local involvement - were submitted and will be explored as the project progresses.

To find out answers to all the key questions from the consultation please visit the 'frequently asked questions' page on the [North Falls website](#)

Frequently asked questions

Our main [frequently asked questions](#) page includes answers to many of the questions that were asked at this consultation, as well as others which have been asked throughout our development process. If you can't see an answer to a question you have, please send it to us directly via one of the methods on the [contact us](#) page.

Feedback form responses

The responses received via the completed feedback forms have been summarised and can be viewed in a number of ways. You can either view them [online here](#) or they can be downloaded as a PDF via the button below.

DOWNLOAD FEEDBACK FORM RESPONSE SUMMARY 

View feedback form responses

[Need and rationale](#)

[Offshore Transmission Network Review](#)

[Development process](#)

[Stakeholders](#)

[The wind farm](#)

[Offshore](#)

[Landfall](#)

[Onshore](#)